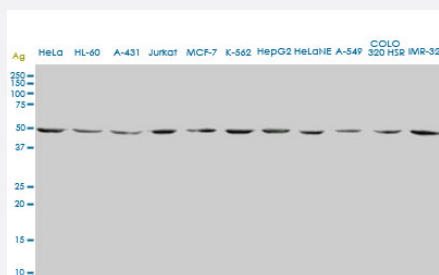


ENO2 monoclonal antibody (M01), clone 1A3

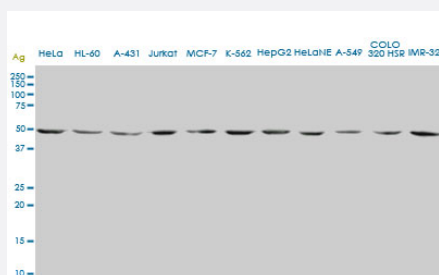
Catalog # H00002026-M01 Size 100 ug

Applications



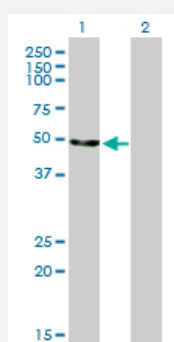
Western Blot (Cell lysate)

ENO2 monoclonal antibody (M01), clone 1A3. Western Blot analysis of ENO2 expression in HeLa (Cat # L013V1).



Western Blot (Cell lysate)

ENO2 monoclonal antibody (M01), clone 1A3. Western Blot analysis of ENO2 expression in different cell lines.



Western Blot (Transfected lysate)

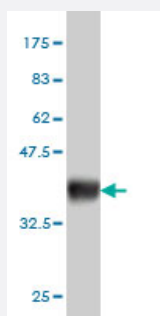
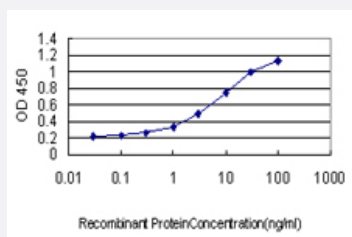
Western Blot analysis of ENO2 expression in transfected 293T cell line by ENO2 monoclonal antibody (M01), clone 1A3.

Lane 1: ENO2 transfected lysate(47.3 KDa).

Lane 2: Non-transfected lysate.

Sandwich ELISA (Recombinant protein)

Detection limit for recombinant GST tagged ENO2 is approximately 0.1ng/ml as a capture antibody.



Western Blot detection against Immunogen (37.84 KDa) .

Specification

Product Description	Mouse monoclonal antibody raised against a partial recombinant ENO2.
Immunogen	ENO2 (AAH02745, 325 a.a. ~ 434 a.a) partial recombinant protein with GST tag. MW of the GST tag alone is 26 KDa.
Sequence	PKRIERAVEEKACNCLLLKVNQIGSVTEAIQACKLAQENGWGVMSHRSGETEDTFIADLVVGLC TGQIKTGAPCRSERLAKYNQLMRIIEELGDEARFAGHNFRNPSVL
Host	Mouse
Reactivity	Human
Isotype	IgG2a Kappa
Quality Control Testing	Antibody Reactive Against Recombinant Protein. Western Blot detection against Immunogen (37.84 KDa) .
Storage Buffer	In 1x PBS, pH 7.4
Storage Instruction	Store at -20°C or lower. Aliquot to avoid repeated freezing and thawing.

Applications

- Western Blot (Cell lysate)

ENO2 monoclonal antibody (M01), clone 1A3. Western Blot analysis of ENO2 expression in HeLa (Cat # L013V1).

[Protocol Download](#)

- Western Blot (Cell lysate)

ENO2 monoclonal antibody (M01), clone 1A3. Western Blot analysis of ENO2 expression in different cell lines.

[Protocol Download](#)

- Western Blot (Transfected lysate)

Western Blot analysis of ENO2 expression in transfected 293T cell line by ENO2 monoclonal antibody (M01), clone 1A3.

Lane 1: ENO2 transfected lysate(47.3 KDa).

Lane 2: Non-transfected lysate.

[Protocol Download](#)

- Western Blot (Recombinant protein)

[Protocol Download](#)

- Sandwich ELISA (Recombinant protein)

Detection limit for recombinant GST tagged ENO2 is approximately 0.1ng/ml as a capture antibody.

[Protocol Download](#)

- ELISA

Gene Info — ENO2

Entrez GeneID [2026](#)

GeneBank Accession# [BC002745](#)

Protein Accession# [AAH02745](#)

Gene Name ENO2

Gene Alias NSE

Gene Description enolase 2 (gamma, neuronal)

Omim ID [131360](#)

Gene Ontology

[Hyperlink](#)

Gene Summary

This gene encodes one of the three enolase isoenzymes found in mammals. This isoenzyme, a homodimer, is found in mature neurons and cells of neuronal origin. A switch from alpha enolase to gamma enolase occurs in neural tissue during development in rats and primates. [provided by RefSeq]

Other Designations

2-phospho-D-glycerate hydrolyase|enolase 2|neural enolase|neuron specific gamma enolase|neuron-specific enolase

Publication Reference

- [The influence of gaseous microemboli on various biomarkers after minimized cardiopulmonary bypass.](#)

Stehouwer MC, de Vroeghe R, Bruggemans EF, Hofman FN, Molenaar MA, van Oeveren W, de Mol BA, Bruins P. Perfusion 2019 Aug; 267659119867572.

Application: Cap Ab, ELISA, Human, Human blood

- [Identification of alpha-Enolase as an Autoantigen in Lung Cancer: Its Overexpression Is Associated with Clinical Outcomes.](#)

Chang GC, Liu KJ, Hsieh CL, Hu TS, Charoenfuprasert S, Liu HK, Luh KT, Hsu LH, Wu CW, Ting CC, Chen CY, Chen KC, Yang TY, Chou TY, Wang WH, Whang-Peng J, Shih NY.

Clinical Cancer Research 2006 Oct; 12(19):5746.

Application: WB-Tr, Human, HeLa cells

Pathway

- [Biosynthesis of alkaloids derived from histidine and purine](#)
- [Biosynthesis of alkaloids derived from ornithine](#)
- [Biosynthesis of alkaloids derived from shikimate pathway](#)
- [Biosynthesis of alkaloids derived from terpenoid and polyketide](#)
- [Biosynthesis of phenylpropanoids](#)
- [Biosynthesis of plant hormones](#)
- [Biosynthesis of terpenoids and steroids](#)
- [Glycolysis / Gluconeogenesis](#)
- [Metabolic pathways](#)

- [RNA degradation](#)

Disease

- [Alzheimer disease](#)
- [Cerebral Amyloid Angiopathy](#)
- [Genetic Predisposition to Disease](#)
- [Neuroblastoma](#)
- [Schizophrenia](#)