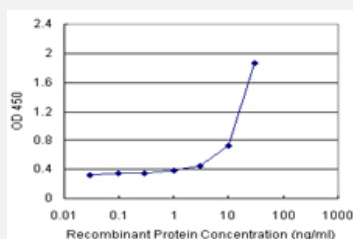


SERPINB1 (Human) Matched Antibody Pair

Catalog # H00001992-AP11 Size 1 Set

Applications



Sandwich ELISA detection sensitivity ranging from 1 ng/ml to 100 ng/ml.

Specification

Product Description	This antibody pair set comes with a matched antibody pair to detect and quantify the protein level of human SERPINB1.
Reactivity	Human
Quality Control Testing	Standard curve using recombinant protein (H00001992-P01) as an analyte. Sandwich ELISA detection sensitivity ranging from 1 ng/ml to 100 ng/ml.
Supplied Product	Antibody pair set content: 1. Capture antibody: rabbit MaxPab® affinity purified polyclonal anti-SERPINB1 (100 ug) 2. Detection antibody: mouse monoclonal anti-SERPINB1, IgG2a Kappa (20 ug) *Reagents are sufficient for at least 1-2 x 96 well plates using recommended protocols.
Storage Instruction	Store reagents of the antibody pair set at -20°C or lower. Please aliquot to avoid repeated freeze thaw cycle. Reagents should be returned to -20°C storage immediately after use.

Applications

- ELISA Pair (Recombinant protein)

[Protocol Download](#)

Gene Info — SERPINB1

Entrez GeneID	1992
Gene Name	SERPINB1
Gene Alias	EI, ELANH2, LEI, M/NEI, MNEI, PI2
Gene Description	serpin peptidase inhibitor, clade B (ovalbumin), member 1
Omim ID	130135
Gene Ontology	Hyperlink
Gene Summary	clade B (ovalbumin)
Other Designations	OTTHUMP00000015943 anti-elastase protease inhibitor 2 (anti-elastase), monocyte/neutrophil derived serine (or cysteine) proteinase inhibitor, clade B (ovalbumin), member 1

Disease

- [Coronary Artery Disease](#)
- [Genetic Predisposition to Disease](#)
- [Hyperparathyroidism](#)