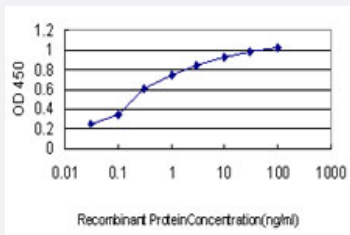


EPHA2 monoclonal antibody (M01), clone 6F8

Catalog # H00001969-M01

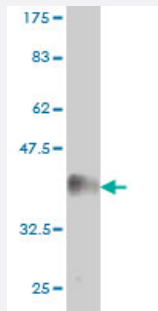
Size 100 ug

Applications



Sandwich ELISA (Recombinant protein)

Detection limit for recombinant GST tagged EPHA2 is approximately 0.03ng/ml as a capture antibody.



Western Blot detection against Immunogen (39.16 KDa) .

Specification

Product Description	Mouse monoclonal antibody raised against a partial recombinant EPHA2.
Immunogen	EPHA2 (AAH37166, 204 a.a. ~ 326 a.a) partial recombinant protein with GST tag. MW of the GST tag alone is 26 KDa.
Sequence	LLQGLAHFPETIAGSDAPSLATVAGTCVDHAVVPPGGEEPRMHCAVDGEWLVPISQCLCQAGYEKVEDACQACSPGFFKFEASESPCLECPEHTLPSPGATSCECEEGFFRAPQDPASMPCT
Host	Mouse
Reactivity	Human

Interspecies Antigen Sequence	Mouse (82); Rat (84)
Isotype	IgG2a Kappa
Quality Control Testing	Antibody Reactive Against Recombinant Protein. Western Blot detection against Immunogen (39.16 KDa) .
Storage Buffer	In 1x PBS, pH 7.4
Storage Instruction	Store at -20°C or lower. Aliquot to avoid repeated freezing and thawing.

Applications

- Western Blot (Recombinant protein)

[Protocol Download](#)

- Sandwich ELISA (Recombinant protein)

Detection limit for recombinant GST tagged EPHA2 is approximately 0.03ng/ml as a capture antibody.

[Protocol Download](#)

- ELISA

Gene Info — EPHA2

Entrez GeneID	1969
GeneBank Accession#	BC037166
Protein Accession#	AAH37166
Gene Name	EPHA2
Gene Alias	ECK
Gene Description	EPH receptor A2
Omim ID	176946
Gene Ontology	Hyperlink

Gene Summary

This gene belongs to the ephrin receptor subfamily of the protein-tyrosine kinase family. EPH and EPH-related receptors have been implicated in mediating developmental events, particularly in the nervous system. Receptors in the EPH subfamily typically have a single kinase domain and an extracellular region containing a Cys-rich domain and 2 fibronectin type III repeats. The ephrin receptors are divided into 2 groups based on the similarity of their extracellular domain sequences and their affinities for binding ephrin-A and ephrin-B ligands. This gene encodes a protein that binds ephrin-A ligands. [provided by RefSeq]

Other Designations

ephrin receptor EphA2|epithelial cell receptor protein tyrosine kinase|protein tyrosine kinase|receptor protein tyrosine kinase regulated by p53 and E2F-1|soluble EPHA2 variant 1

Publication Reference

- [FMNL2 is a positive regulator of cell motility and metastasis in colorectal carcinoma.](#)

Zhu XL, Zeng YF, Guan J, Li YF, Deng YJ, Bian XW, Ding YQ, Liang L.

The Journal of Pathology 2011 Jul; 224(3):377.

Application: WB-Ce, Human, CRC cell lines SW620, SW480, HT29

Pathway

- [Axon guidance](#)

Disease

- [Cataract](#)
- [Genetic Predisposition to Disease](#)
- [Hearing Loss](#)