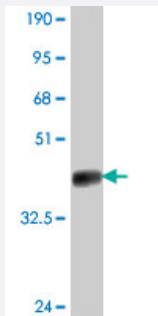


# EPHA2 polyclonal antibody (A01)

Catalog # H00001969-A01

Size 50 uL

## Applications



Western Blot detection against Immunogen (39.53 KDa) .

## Specification

<b>Product Description</b>	Mouse polyclonal antibody raised against a partial recombinant EPHA2.
<b>Immunogen</b>	EPHA2 (AAH37166, 204 a.a. ~ 326 a.a) partial recombinant protein with GST tag.
<b>Sequence</b>	LLQGLAHFPETIAGSDAPSLATVAGTCVDHAVVPPGGEEPRMHCAVDGEWLVPIGQCCLCQAGYE KVEDACQACSPGFFKFEASESPCLECPEHTLPSPEGATSCCEEGFFRAPQDPASMPCT
<b>Host</b>	Mouse
<b>Reactivity</b>	Human
<b>Interspecies Antigen Sequence</b>	Mouse (82); Rat (84)
<b>Quality Control Testing</b>	Antibody Reactive Against Recombinant Protein. Western Blot detection against Immunogen (39.53 KDa) .
<b>Storage Buffer</b>	50 % glycerol
<b>Storage Instruction</b>	Store at -20°C or lower. Aliquot to avoid repeated freezing and thawing.

## Applications

- Western Blot (Recombinant protein)

[Protocol Download](#)

- ELISA

## Gene Info — EPHA2

Entrez GeneID [1969](#)

GeneBank Accession# [BC037166](#)

Protein Accession# [AAH37166](#)

Gene Name EPHA2

Gene Alias ECK

Gene Description EPH receptor A2

Omim ID [176946](#)

Gene Ontology [Hyperlink](#)

**Gene Summary** This gene belongs to the ephrin receptor subfamily of the protein-tyrosine kinase family. EPH and EPH-related receptors have been implicated in mediating developmental events, particularly in the nervous system. Receptors in the EPH subfamily typically have a single kinase domain and an extracellular region containing a Cys-rich domain and 2 fibronectin type III repeats. The ephrin receptors are divided into 2 groups based on the similarity of their extracellular domain sequences and their affinities for binding ephrin-A and ephrin-B ligands. This gene encodes a protein that binds ephrin-A ligands. [provided by RefSeq]

**Other Designations** ephrin receptor EphA2|epithelial cell receptor protein tyrosine kinase|protein tyrosine kinase|receptor protein tyrosine kinase regulated by p53 and E2F-1|soluble EPHA2 variant 1

## Pathway

- [Axon guidance](#)

## Disease

- [Cataract](#)
- [Genetic Predisposition to Disease](#)

- [Hearing Loss](#)