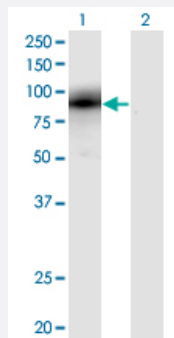


EGR1 monoclonal antibody (M03), clone 6E8

Catalog # H00001958-M03

Size 100 ug

Applications

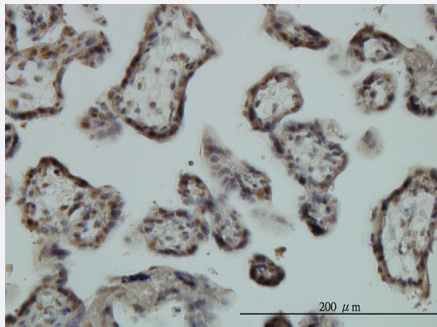


Western Blot (Transfected lysate)

Western Blot analysis of EGR1 expression in transfected 293T cell line by EGR1 monoclonal antibody (M03), clone 6E8.

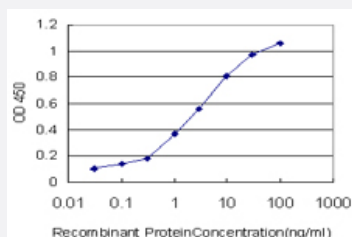
Lane 1: EGR1 transfected lysate (59.73 KDa).

Lane 2: Non-transfected lysate.



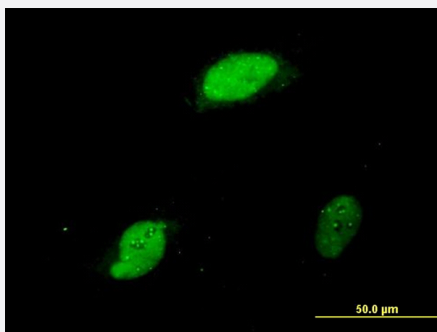
Immunohistochemistry (Formalin/PFA-fixed paraffin-embedded sections)

Immunoperoxidase of monoclonal antibody to EGR1 on formalin-fixed paraffin-embedded human placenta. [antibody concentration 3 ug/ml]



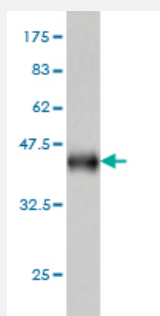
Sandwich ELISA (Recombinant protein)

Detection limit for recombinant GST tagged EGR1 is approximately 0.1 ng/ml as a capture antibody.



Immunofluorescence

Immunofluorescence of monoclonal antibody to EGR1 on HeLa cell. [antibody concentration 10 ug/ml]



Western Blot detection against Immunogen (36.74 KDa) .

Specification

Product Description	Mouse monoclonal antibody raised against a partial recombinant EGR1.
Immunogen	EGR1 (NP_001955, 444 a.a. ~ 543 a.a) partial recombinant protein with GST tag. MW of the GST tag alone is 26 KDa.
Sequence	SPVATSYSPVTTSYSPATTSYSPVPTSFSSPGSSSTYSPVHSGFPSPSVATTYSSVPPAFPAQVSSFPSSAVTNSFSASTGLSDMTATFSPRTIEIC
Host	Mouse
Reactivity	Human, Mouse, Rat
Interspecies Antigen Sequence	Mouse (87); Rat (89)
Isotype	IgG2a Kappa
Quality Control Testing	Antibody Reactive Against Recombinant Protein. Western Blot detection against Immunogen (36.74 KDa) .
Storage Buffer	In 1x PBS, pH 7.4
Storage Instruction	Store at -20°C or lower. Aliquot to avoid repeated freezing and thawing.

Applications

- Western Blot (Transfected lysate)

Western Blot analysis of EGR1 expression in transfected 293T cell line by EGR1 monoclonal antibody (M03), clone 6E8.

Lane 1: EGR1 transfected lysate(59.73 KDa).

Lane 2: Non-transfected lysate.

[Protocol Download](#)

- Western Blot (Recombinant protein)

[Protocol Download](#)

- Immunohistochemistry (Formalin/PFA-fixed paraffin-embedded sections)

Immunoperoxidase of monoclonal antibody to EGR1 on formalin-fixed paraffin-embedded human placenta. [antibody concentration 3 ug/ml]

[Protocol Download](#)

- Sandwich ELISA (Recombinant protein)

Detection limit for recombinant GST tagged EGR1 is approximately 0.1ng/ml as a capture antibody.

[Protocol Download](#)

- ELISA

- Immunofluorescence

Immunofluorescence of monoclonal antibody to EGR1 on HeLa cell. [antibody concentration 10 ug/ml]

Gene Info — EGR1

Entrez GeneID	1958
---------------	----------------------

GeneBank Accession#	NM_001964
---------------------	---------------------------

Protein Accession#	NP_001955
--------------------	---------------------------

Gene Name	EGR1
-----------	------

Gene Alias	AT225, G0S30, KROX-24, NGFI-A, TIS8, ZIF-268, ZNF225
------------	--

Gene Description	early growth response 1
------------------	-------------------------

Omim ID	128990
Gene Ontology	Hyperlink
Gene Summary	The protein encoded by this gene belongs to the EGR family of C2H2-type zinc-finger proteins. It is a nuclear protein and functions as a transcriptional regulator. The products of target genes it activates are required for differentiation and mitogenesis. Studies suggest this is a cancer suppressor gene. [provided by RefSeq]
Other Designations	early growth response protein 1 nerve growth factor-induced protein A transcription factor ETR103 zinc finger protein 225

Publication Reference

- [A novel EGR-1 dependent mechanism for YB-1 modulation of paclitaxel response in a triple negative breast cancer cell line.](#)

Lasham A, Mehta SY, Fitzgerald SJ, Woolley AG, Hearn JI, Hurley DG, Ruza I, Algie M, Shelling AN, Braithwaite AW, Print CG. International Journal of Cancer 2016 May; 139(5):1157.

Application: IHC, Human, MDA-MB-231

- [Induction of hypertrophy in vitro by mechanical loading in adult rabbit myocardium.](#)

Bupha-Intr T, Holmes JW, Janssen PM.

American Journal of Physiology. Heart and Circulatory Physiology 2007 Oct; 293(6):H3759.

Application: WB, Rabbit, Rabbit myocardium

Pathway

- [Prion diseases](#)

Disease

- [Asthma](#)
- [Genetic Predisposition to Disease](#)
- [Myopia](#)
- [Rhinitis](#)
- [Schizophrenia](#)