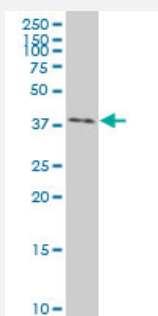


# EFNB2 polyclonal antibody (A01)

Catalog # H00001948-A01

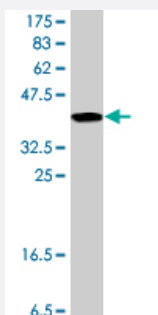
Size 50 uL

## Applications



### Western Blot (Cell lysate)

EFNB2 polyclonal antibody (A01), Lot # 050912JC01 Western Blot analysis of EFNB2 expression in 293 ( Cat # L026V1 ).



Western Blot detection against Immunogen (37.11 KDa) .

## Specification

Product Description	Mouse polyclonal antibody raised against a partial recombinant EFNB2.
Immunogen	EFNB2 (NP_004084, 28 a.a. ~ 127 a.a) partial recombinant protein with GST tag.
Sequence	MLEPIYWNSSNSKFLPGQGLVLYPQIGDKLDIICPKVDSKTVGQYEEYKVMVDKDQADRCTIKKE NTPLLNCAKPDQDIKFTIKFQEFSPNLWGLEFQ
Host	Mouse
Reactivity	Human
Interspecies Antigen Sequence	Mouse (98)

**Quality Control Testing**

Antibody Reactive Against Recombinant Protein.  
Western Blot detection against Immunogen (37.11 KDa) .

**Storage Buffer**

50 % glycerol

**Storage Instruction**

Store at -20°C or lower. Aliquot to avoid repeated freezing and thawing.

## Applications

- Western Blot (Cell lysate)

EFNB2 polyclonal antibody (A01), Lot # 050912JC01 Western Blot analysis of EFNB2 expression in 293 ( Cat # L026V1 ).

[Protocol Download](#)

- Western Blot (Recombinant protein)

[Protocol Download](#)

- ELISA

## Gene Info — EFNB2

**Entrez GeneID**

[1948](#)

**GeneBank Accession#**

[NM\\_004093](#)

**Protein Accession#**

[NP\\_004084](#)

**Gene Name**

EFNB2

**Gene Alias**

EPLG5, HTKL, Htk-L, LERK5, MGC126226, MGC126227, MGC126228

**Gene Description**

ephrin-B2

**Omim ID**

[600527](#)

**Gene Ontology**

[Hyperlink](#)

**Gene Summary**

This gene encodes a member of the ephrin (EPH) family. The ephrins and EPH-related receptors comprise the largest subfamily of receptor protein-tyrosine kinases and have been implicated in mediating developmental events, especially in the nervous system and in erythropoiesis. Based on their structures and sequence relationships, ephrins are divided into the ephrin-A (EFNA) class, which are anchored to the membrane by a glycosylphosphatidylinositol linkage, and the ephrin-B (EFNB) class, which are transmembrane proteins. This gene encodes an EFNB class ephrin which binds to the EPHB4 and EPHA3 receptors. [provided by RefSeq]

**Other Designations**

HTK ligand|eph-related receptor tyrosine kinase ligand 5|ephrin B2|ligand of eph-related kinase 5

**Pathway**

- [Axon guidance](#)

**Disease**

- [Genetic Predisposition to Disease](#)
- [Kidney Failure](#)
- [Neovascularization](#)
- [Schizophrenia](#)