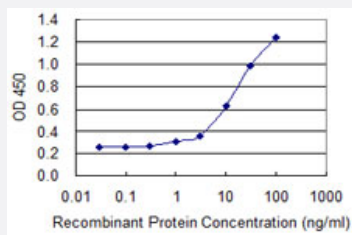


DUSP3 monoclonal antibody (M07), clone 2C4

Catalog # H00001845-M07

Size 100 ug

Applications



Sandwich ELISA (Recombinant protein)

Detection limit for recombinant GST tagged DUSP3 is 0.3 ng/ml as a capture antibody.

Specification

Product Description	Mouse monoclonal antibody raised against a partial recombinant DUSP3.
Immunogen	DUSP3 (NP_004081, 76 a.a. ~ 185 a.a) partial recombinant protein with GST tag. MW of the GST tag alone is 26 KDa.
Sequence	NFYKDSGITYLGKANDTQEFNLSAYFERAADFIDQALAQKNGRVLVHCREGYSRPTLVIAYLMMR QKMDVKSALSIVRQNREIGPNDGFLAQLCQLNDRLAKEGKLP
Host	Mouse
Reactivity	Human
Interspecies Antigen Sequence	Mouse (94); Rat (92)
Isotype	IgG1 Kappa
Quality Control Testing	Antibody Reactive Against Recombinant Protein.
Storage Buffer	In 1x PBS, pH 7.4
Storage Instruction	Store at -20°C or lower. Aliquot to avoid repeated freezing and thawing.

Applications

- Sandwich ELISA (Recombinant protein)

Detection limit for recombinant GST tagged DUSP3 is 0.3 ng/ml as a capture antibody.

[Protocol Download](#)

- ELISA

Gene Info — DUSP3

Entrez GeneID [1845](#)

GeneBank Accession# [NM_004090](#)

Protein Accession# [NP_004081](#)

Gene Name DUSP3

Gene Alias VHR

Gene Description dual specificity phosphatase 3

Omim ID [600183](#)

Gene Ontology [Hyperlink](#)

Gene Summary

The protein encoded by this gene is a member of the dual specificity protein phosphatase subfamily. These phosphatases inactivate their target kinases by dephosphorylating both the phosphoserine/threonine and phosphotyrosine residues. They negatively regulate members of the mitogen-activated protein (MAP) kinase superfamily (MAPK/ERK, SAPK/JNK, p38), which are associated with cellular proliferation and differentiation. Different members of the family of dual specificity phosphatases show distinct substrate specificities for various MAP kinases, different tissue distribution and subcellular localization, and different modes of inducibility of their expression by extracellular stimuli. This gene maps in a region that contains the BRCA1 locus which confers susceptibility to breast and ovarian cancer. Although DUSP3 is expressed in both breast and ovarian tissues, mutation screening in breast cancer pedigrees and in sporadic tumors was negative, leading to the conclusion that this gene is not BRCA1. [provided by RefSeq]

Other Designations serine/threonine specific protein phosphatase|vaccinia virus phosphatase VH1-related

Pathway

- [MAPK signaling pathway](#)