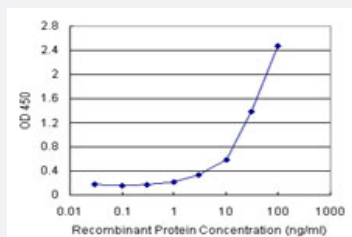


# TSC22D3 (Human) Matched Antibody Pair

Catalog # H00001831-AP11

Size 1 Set

## Applications



Sandwich ELISA detection sensitivity ranging from 1 ng/ml to 100 ng/ml.

## Specification

### Product Description

This antibody pair set comes with a matched antibody pair to detect and quantify the protein level of human TSC22D3.

### Reactivity

Human

### Quality Control Testing

Standard curve using recombinant protein ( H00001831-P01 ) as an analyte.  
Sandwich ELISA detection sensitivity ranging from 1 ng/ml to 100 ng/ml.

### Supplied Product

Antibody pair set content:

1. Capture antibody: rabbit MaxPab® affinity purified polyclonal anti-TSC22D3 (100 ug)
2. Detection antibody: mouse monoclonal anti-TSC22D3, IgG2a Kappa (20 ug)

\*Reagents are sufficient for at least 1-2 x 96 well plates using recommended protocols.

### Storage Instruction

Store reagents of the antibody pair set at -20°C or lower. Please aliquot to avoid repeated freeze thaw cycle. Reagents should be returned to -20°C storage immediately after use.

## Applications

- ELISA Pair (Recombinant protein)

[Protocol Download](#)

## Gene Info — TSC22D3

Entrez GeneID	<a href="#">1831</a>
Gene Name	TSC22D3
Gene Alias	DIP, DKFZp313A1123, DSIPI, GILZ, TSC-22R, hDIP
Gene Description	TSC22 domain family, member 3
Omim ID	<a href="#">300506</a>
Gene Ontology	<a href="#">Hyperlink</a>
Gene Summary	<p>The protein encoded by this gene shares significant sequence identity with the murine TSC-22 and Drosophila shs, both of which are leucine zipper proteins, that function as transcriptional regulators. The expression of this gene is stimulated by glucocorticoids and interleukin 10, and it appears to play a key role in the anti-inflammatory and immunosuppressive effects of this steroid and chemokine. Transcript variants encoding different isoforms have been identified for this gene. [provided by RefSeq]</p>
Other Designations	DSIP-immunoreactive leucine zipper protein OTTHUMP00000023811 OTTHUMP00000023813 OTTHUMP00000023814 TSC-22 related protein delta sleep inducing peptide, immunoreactor glucocorticoid-induced leucine zipper protein

## Disease

- [Diabetes Mellitus](#)