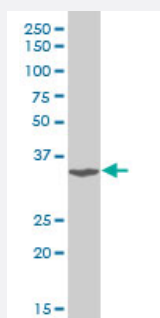


TSC22D3 polyclonal antibody (A01)

Catalog # H00001831-A01

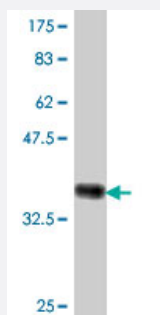
Size 50 uL

Applications



Western Blot (Cell lysate)

TSC22D3 polyclonal antibody (A01), Lot # 051018JC01. Western Blot analysis of TSC22D3 expression in Daoy. isoform:22.213KDa



Western Blot detection against Immunogen (36.78 KDa) .

Specification

Product Description

Mouse polyclonal antibody raised against a partial recombinant TSC22D3.

Immunogen

TSC22D3 (NP_932174, 1 a.a. ~ 97 a.a) partial recombinant protein with GST tag.

Sequence

MAQSKLDCRSPVGLDCCNCCLDLAHRSGLRGSSGENNNPGSPTVSNFRQLQEKLVFENLNTD
KLNSIMRQDSLEPVLRDPCYLINEGICNRNIDQT

Host

Mouse

Reactivity

Human

Quality Control Testing

Antibody Reactive Against Recombinant Protein.
Western Blot detection against Immunogen (36.78 KDa) .

Storage Buffer

50 % glycerol

Storage Instruction

Store at -20°C or lower. Aliquot to avoid repeated freezing and thawing.

Applications

- Western Blot (Cell lysate)

TSC22D3 polyclonal antibody (A01), Lot # 051018JC01. Western Blot analysis of TSC22D3 expression in Daoy.
isoform:22.213KDa

[Protocol Download](#)

- Western Blot (Recombinant protein)

[Protocol Download](#)

- ELISA

Gene Info — TSC22D3

Entrez GeneID[1831](#)**GeneBank Accession#**[NM_198057](#)**Protein Accession#**[NP_932174](#)**Gene Name**

TSC22D3

Gene Alias

DIP, DKFZp313A1123, DSIPI, GILZ, TSC-22R, hDIP

Gene Description

TSC22 domain family, member 3

Omim ID[300506](#)**Gene Ontology**[Hyperlink](#)**Gene Summary**

The protein encoded by this gene shares significant sequence identity with the murine TSC-22 and Drosophila shs, both of which are leucine zipper proteins, that function as transcriptional regulators. The expression of this gene is stimulated by glucocorticoids and interleukin 10, and it appears to play a key role in the anti-inflammatory and immunosuppressive effects of this steroid and chemokine. Transcript variants encoding different isoforms have been identified for this gene. [provided by RefSeq]

Other Designations

DSIP-immunoreactive leucine zipper protein|OTTHUMP00000023811|OTTHUMP00000023813|
OTTHUMP00000023814|TSC-22 related protein|delta sleep inducing peptide, immunoreactor|glu
cocorticoid-induced leucine zipper protein

Disease

- [Diabetes Mellitus](#)