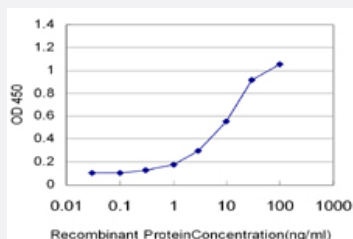


DSCR1 monoclonal antibody (M03), clone 1B1

Catalog # H00001827-M03

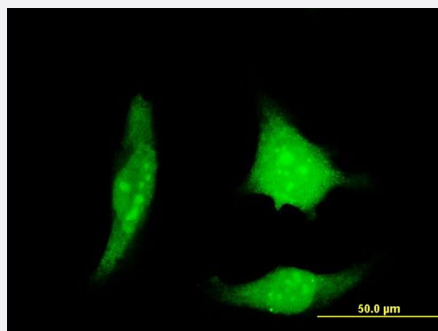
Size 100 ug

Applications



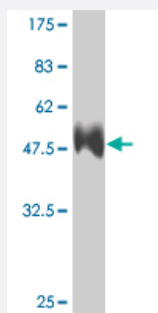
Sandwich ELISA (Recombinant protein)

Detection limit for recombinant GST tagged DSCR1 is approximately 0.3ng/ml as a capture antibody.



Immunofluorescence

Immunofluorescence of monoclonal antibody to RCAN1 on HeLa cell .
[antibody concentration 10 ug/ml]



Western Blot detection against Immunogen (36.63 KDa) .

Specification

Product Description

Mouse monoclonal antibody raised against a partial recombinant DSCR1.

Immunogen	DSCR1 (AAH02864, 1 a.a. ~ 100 a.a) partial recombinant protein with GST tag. MW of the GST tag alone is 26 KDa.
Sequence	MEEVDLQDLPSATIACHLDPRVFVDGLCRAKFESLFRTYDKDITFYFKSFKRVRINFSNPFSAAD ARLQLHKTEFLGKEMKLYFAQTLHIGSSHLAPPN
Host	Mouse
Reactivity	Human
Isotype	IgG2b Kappa
Quality Control Testing	Antibody Reactive Against Recombinant Protein. Western Blot detection against Immunogen (36.63 KDa) .
Storage Buffer	In 1x PBS, pH 7.4
Storage Instruction	Store at -20°C or lower. Aliquot to avoid repeated freezing and thawing.

Applications

- Western Blot (Recombinant protein)

[Protocol Download](#)

- Sandwich ELISA (Recombinant protein)

Detection limit for recombinant GST tagged DSCR1 is approximately 0.3ng/ml as a capture antibody.

[Protocol Download](#)

- ELISA

- Immunofluorescence

Immunofluorescence of monoclonal antibody to RCAN1 on HeLa cell . [antibody concentration 10 ug/ml]

Gene Info — RCAN1

Entrez GeneID	1827
GeneBank Accession#	BC002864
Protein Accession#	AAH02864
Gene Name	RCAN1

Gene Alias	ADAPT78, CSP1, DSC1, DSCR1, MCIP1, RCN1
Gene Description	regulator of calcineurin 1
Omim ID	602917
Gene Ontology	Hyperlink
Gene Summary	The protein encoded by this gene interacts with calcineurin A and inhibits calcineurin-dependent signaling pathways, possibly affecting central nervous system development. This gene is located in the minimal candidate region for the Down syndrome phenotype, and is overexpressed in the brain of Down syndrome fetuses. Chronic overexpression of this gene may lead to neurofibrillary tangles such as those associated with Alzheimer disease. Three transcript variants encoding three different isoforms have been found for this gene. [provided by RefSeq]
Other Designations	Down syndrome candidate region 1 Down syndrome critical region gene 1 calciressin 1 calcium and oxidant-inducible mRNA modulatory calcineurin-interacting protein 1 myocyte-enriched calcineurin-interacting protein 1 near DSCR proline-rich protein

Publication Reference

- [Creation and characterization of BAC-transgenic mice with physiological overexpression of epitope-tagged RCAN1 \(DSCR1\).](#)

Xing L, Salas M, Zhang H, Gittler J, Ludwig T, Lin CS, Murty VV, Silverman W, Arancio O, Tycko B.

Mammalian Genome 2013 Feb; 24(1-2):30.

Application: WB-Ti, Human, Mouse, Brains

Disease

- [Cognition](#)
- [Genetic Predisposition to Disease](#)
- [Schizophrenia](#)
- [Tobacco Use Disorder](#)