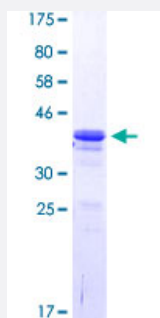


# DLX5 (Human) Recombinant Protein (Q01)

Catalog # H00001749-Q01

Size 25 ug, 10 ug

## Applications



## Specification

<b>Product Description</b>	Human DLX5 partial ORF (NP_005212.1, 1 a.a. - 110 a.a.) recombinant protein with GST tag at N-terminal.
<b>Sequence</b>	MTGVFDRRVPSIRSGDFQAPFQTSAAHHPSQESPTLPESATDSDYISPTGGAPHGYCSPTSA SYGKALNPYQYQYHGVNGSAGSYPAKAYADYSYASSYHQYGGAYNR
<b>Host</b>	Wheat Germ (in vitro)
<b>Theoretical MW (kDa)</b>	37.73
<b>Interspecies Antigen Sequence</b>	Mouse (94); Rat (92)
<b>Preparation Method</b>	<a href="#">in vitro wheat germ expression system</a>
<b>Purification</b>	Glutathione Sepharose 4 Fast Flow
<b>Quality Control Testing</b>	12.5% SDS-PAGE Stained with Coomassie Blue
<b>Storage Buffer</b>	50 mM Tris-HCl, 10 mM reduced Glutathione, pH=8.0 in the elution buffer.
<b>Storage Instruction</b>	Store at -80°C. Aliquot to avoid repeated freezing and thawing.
<b>Note</b>	Best use within three months from the date of receipt of this protein.

## Applications

- Enzyme-linked Immunoabsorbent Assay
- Western Blot (Recombinant protein)
- Antibody Production
- Protein Array

## Gene Info — DLX5

Entrez GeneID [1749](#)

GeneBank Accession# [NM\\_005221.5](#)

Protein Accession# [NP\\_005212.1](#)

Gene Name DLX5

Gene Alias -

Gene Description distal-less homeobox 5

Omim ID [600028](#)

Gene Ontology [Hyperlink](#)

**Gene Summary** This gene encodes a member of a homeobox transcription factor gene family similar to the Drosophila distal-less gene. The encoded protein may play a role in bone development and fracture healing. Mutation in this gene, which is located in a tail-to-tail configuration with another member of the family on the long arm of chromosome 7, may be associated with split-hand/split-foot malformation. [provided by RefSeq]

**Other Designations** distal-less homeo box 5

## Disease

- [Cleft Lip](#)
- [Cleft Palate](#)