

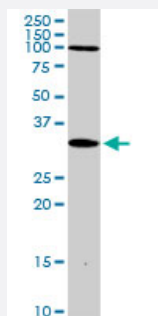
MaxPab®

DLX3 purified MaxPab rabbit polyclonal antibody (D01P)

Catalog # H00001747-D01P

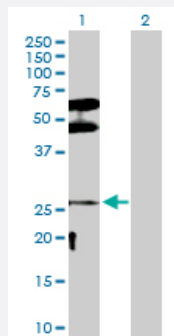
Size 100 ug

Applications



Western Blot (Tissue lysate)

DLX3 MaxPab rabbit polyclonal antibody. Western Blot analysis of DLX3 expression in mouse brain.



Western Blot (Transfected lysate)

Western Blot analysis of DLX3 expression in transfected 293T cell line ([H00001747-T02](#)) by DLX3 MaxPab polyclonal antibody.

Lane 1: DLX3 transfected lysate(31.70 KDa).

Lane 2: Non-transfected lysate.

Specification

Product Description

Rabbit polyclonal antibody raised against a full-length human DLX3 protein.

Immunogen

DLX3 (NP_005211.1, 1 a.a. ~ 287 a.a) full-length human protein.

Sequence

MSGSFDRKLSSILTDISSLSCHAGSKDSPTLPESVTDLGYYSA PQHDYYSGQPYGQTVNPTYH
HQFNLNGLAGTGAYSPKSEYTYGASYRQYGAYREQPLPAQDPVSVKEEPEAEVRMVNGKPKKV
RKPRTIYSSYQLAALQRRFQKAQYLALPERAELAAQLGLTQTQVKW FQNRRSKFKKLYKNGEVPL
EHSPNNSDSMACNSPPSPALWDTSSHSTPAPARSQLPPPLPYSPSPSYLDDPTNSWYHAQNLS
GPHLQQQPPQPATLHHASPGPPP NPGAVY

Host

Rabbit

Reactivity	Human, Mouse
Quality Control Testing	Antibody reactive against mammalian transfected lysate.
Storage Buffer	In 1x PBS, pH 7.4
Storage Instruction	Store at -20°C or lower. Aliquot to avoid repeated freezing and thawing.

Applications

- Western Blot (Tissue lysate)

DLX3 MaxPab rabbit polyclonal antibody. Western Blot analysis of DLX3 expression in mouse brain.

[Protocol Download](#)

- Western Blot (Transfected lysate)

Western Blot analysis of DLX3 expression in transfected 293T cell line ([H00001747-T02](#)) by DLX3 MaxPab polyclonal antibody.

Lane 1: DLX3 transfected lysate(31.70 KDa).

Lane 2: Non-transfected lysate.

[Protocol Download](#)

Gene Info — DLX3

Entrez GeneID	1747
GeneBank Accession#	NM_005220.2
Protein Accession#	NP_005211.1
Gene Name	DLX3
Gene Alias	AI4, TDO
Gene Description	distal-less homeobox 3
Omim ID	104510 190320 600525
Gene Ontology	Hyperlink

Gene Summary

Many vertebrate homeo box-containing genes have been identified on the basis of their sequence similarity with Drosophila developmental genes. Members of the Dlx gene family contain a homeo box that is related to that of Distal-less (Dll), a gene expressed in the head and limbs of the developing fruit fly. The Distal-less (Dlx) family of genes comprises at least 6 different members, DLX1-DLX6. Trichodontoosseous syndrome (TDO), an autosomal dominant condition, has been correlated with DLX3 gene mutation. This gene is located in a tail-to-tail configuration with another member of the gene family on the long arm of chromosome 17. Mutations in this gene have been associated with the autosomal dominant conditions trichodontoosseous syndrome and amelogenesis imperfecta with taurodontism. [provided by RefSeq]

Other Designations

distal-less homeo box 3

Disease

- [Abnormalities](#)
- [Cleft Lip](#)
- [Cleft Palate](#)
- [Genetic Predisposition to Disease](#)
- [Syndrome](#)
- [Tooth Abnormalities](#)