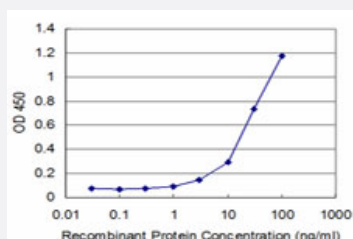


DLX2 monoclonal antibody (M07), clone 3H3

Catalog # H00001746-M07

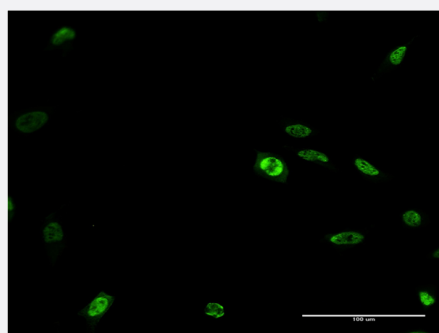
Size 100 ug

Applications



Sandwich ELISA (Recombinant protein)

Detection limit for recombinant GST tagged DLX2 is approximately 3ng/ml as a capture antibody.



Immunofluorescence

Immunofluorescence of monoclonal antibody to DLX2 on HeLa cell . [antibody concentration 10 ug/ml]



Western Blot detection against Immunogen (39.38 KDa) .

Specification

Product Description

Mouse monoclonal antibody raised against a full length recombinant DLX2.

Immunogen	DLX2 (NP_004396, 1 a.a. ~ 124 a.a) full-length recombinant protein with GST tag. MW of the GST tag alone is 26 KDa.
Sequence	MTGVFDSLVLADMHSTQIAASSTYHQHQPPSGGGAGPGGNSSSSSSSLHKPQESPTLPVSTATDSSYYTNQQHPAGGGGGGGSPYAHMGSYQYQASGLNNVPYSAKSSYDLGYTAA YTSYAPYGT
Host	Mouse
Reactivity	Human
Interspecies Antigen Sequence	Rat (91)
Isotype	IgG2a Kappa
Quality Control Testing	Antibody Reactive Against Recombinant Protein. Western Blot detection against Immunogen (39.38 KDa) .
Storage Buffer	In 1x PBS, pH 7.4
Storage Instruction	Store at -20°C or lower. Aliquot to avoid repeated freezing and thawing.

Applications

- Western Blot (Recombinant protein)

[Protocol Download](#)

- Sandwich ELISA (Recombinant protein)

Detection limit for recombinant GST tagged DLX2 is approximately 3ng/ml as a capture antibody.

[Protocol Download](#)

- ELISA

- Immunofluorescence

Immunofluorescence of monoclonal antibody to DLX2 on HeLa cell . [antibody concentration 10 ug/ml]

Gene Info — DLX2

Entrez GeneID [1746](#)

GeneBank Accession# [NM_004405](#)

Protein Accession#	NP_004396
Gene Name	DLX2
Gene Alias	TES-1, TES1
Gene Description	distal-less homeobox 2
Omim ID	126255
Gene Ontology	Hyperlink
Gene Summary	<p>Many vertebrate homeo box-containing genes have been identified on the basis of their sequence similarity with Drosophila developmental genes. Members of the Dlx gene family contain a homeo box that is related to that of Distal-less (Dll), a gene expressed in the head and limbs of the developing fruit fly. The Distal-less (Dlx) family of genes comprises at least 6 different members, DLX1-DLX6. The DLX proteins are postulated to play a role in forebrain and craniofacial development. This gene is located in a tail-to-tail configuration with another member of the gene family on the long arm of chromosome 2. [provided by RefSeq]</p>
Other Designations	distal-less homeo box 2

Disease

- [Autistic Disorder](#)
- [Cleft Lip](#)
- [Cleft Palate](#)
- [Genetic Predisposition to Disease](#)
- [Mental Disorders](#)
- [Schizophrenia](#)