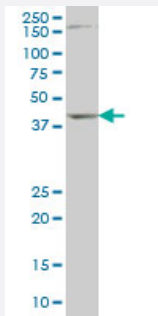


# DLX2 monoclonal antibody (M01), clone 2H2

Catalog # H00001746-M01

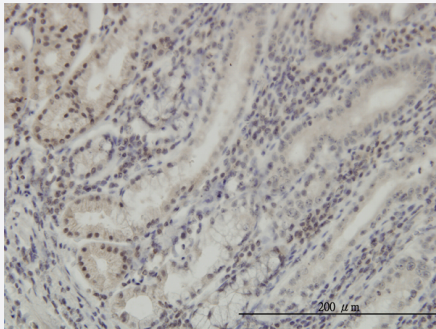
Size 100 ug

## Applications



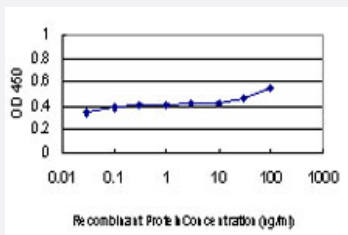
### Western Blot (Cell lysate)

DLX2 monoclonal antibody (M01), clone 2H2 Western Blot analysis of DLX2 expression in NIH/3T3 ( Cat # L018V1 ).



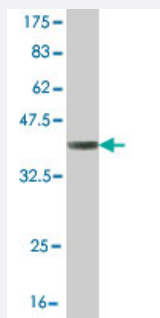
### Immunohistochemistry (Formalin/PFA-fixed paraffin-embedded sections)

Immunoperoxidase of monoclonal antibody to DLX2 on formalin-fixed paraffin-embedded human stomach. [antibody concentration 5 ug/ml]



### Sandwich ELISA (Recombinant protein)

Detection limit for recombinant GST tagged DLX2 is approximately 0.03ng/ml as a capture antibody.



Western Blot detection against Immunogen (38.21 KDa) .

## Specification

<b>Product Description</b>	Mouse monoclonal antibody raised against a partial recombinant DLX2.
<b>Immunogen</b>	DLX2 (NP_004396.1, 1 a.a. ~ 110 a.a) partial recombinant protein with GST tag. MW of the GST tag alone is 26 KDa.
<b>Sequence</b>	MTGVFDSLVLADMHSTQIAASSTYHQHQPPSGGGAGPGGNSSSSSSSLHKPQESPTLPVSTATD SSYYTNQQHPAGGGGGGGSPYAHMGSYQYQASGLNNVPYSAKSSYDL
<b>Host</b>	Mouse
<b>Reactivity</b>	Human, Mouse
<b>Interspecies Antigen Sequence</b>	Rat (90)
<b>Isotype</b>	IgG2a Kappa
<b>Quality Control Testing</b>	Antibody Reactive Against Recombinant Protein. Western Blot detection against Immunogen (38.21 KDa) .
<b>Storage Buffer</b>	In 1x PBS, pH 7.4
<b>Storage Instruction</b>	Store at -20°C or lower. Aliquot to avoid repeated freezing and thawing.

## Applications

- Western Blot (Cell lysate)

DLX2 monoclonal antibody (M01), clone 2H2 Western Blot analysis of DLX2 expression in NIH/3T3 ( Cat # L018V1 ).

[Protocol Download](#)

- Western Blot (Recombinant protein)

[Protocol Download](#)

- Immunohistochemistry (Formalin/PFA-fixed paraffin-embedded sections)

Immunoperoxidase of monoclonal antibody to DLX2 on formalin-fixed paraffin-embedded human stomach. [antibody concentration 5 ug/ml]

[Protocol Download](#)

- Sandwich ELISA (Recombinant protein)

Detection limit for recombinant GST tagged DLX2 is approximately 0.03ng/ml as a capture antibody.

[Protocol Download](#)

- ELISA

## Gene Info — DLX2

Entrez GeneID [1746](#)

GeneBank Accession# [NM\\_004405.3](#)

Protein Accession# [NP\\_004396.1](#)

Gene Name DLX2

Gene Alias TES-1, TES1

Gene Description distal-less homeobox 2

Omim ID [126255](#)

Gene Ontology [Hyperlink](#)

**Gene Summary** Many vertebrate homeo box-containing genes have been identified on the basis of their sequence similarity with Drosophila developmental genes. Members of the Dlx gene family contain a homeo box that is related to that of Distal-less (Dll), a gene expressed in the head and limbs of the developing fruit fly. The Distal-less (Dlx) family of genes comprises at least 6 different members, DLX1-DLX6. The DLX proteins are postulated to play a role in forebrain and craniofacial development. This gene is located in a tail-to-tail configuration with another member of the gene family on the long arm of chromosome 2. [provided by RefSeq]

**Other Designations** distal-less homeo box 2

## Disease

- [Autistic Disorder](#)
- [Cleft Lip](#)
- [Cleft Palate](#)
- [Genetic Predisposition to Disease](#)
- [Mental Disorders](#)
- [Schizophrenia](#)