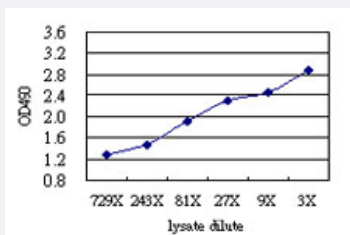


DLX1 (Human) Matched Antibody Pair

Catalog # H00001745-AP61

Size 1 Set

Applications



Sandwich ELISA detection sensitivity ranging from approximately 729x to 3x dilution of the DLX1 293T overexpression lysate (non-denatured).

Specification

Product Description

This antibody pair set comes with a matched antibody pair to detect and quantify the protein level of human DLX1.

Reactivity

Human

Quality Control Testing

Standard curve using DLX1 293T overexpression lysate (non-denatured) as an analyte. Sandwich ELISA detection sensitivity ranging from approximately 729x to 3x dilution of the DLX1 293T overexpression lysate (non-denatured).

Supplied Product

Antibody pair set content:
 1. Capture antibody: mouse monoclonal anti-DLX1 (100 ug)
 2. Detection antibody: rabbit MaxPab® affinity purified polyclonal anti-DLX1 (50 ug)
 *Reagents are sufficient for at least 3-5 x 96 well plates using recommended protocols.

Storage Instruction

Store reagents of the antibody pair set at -20°C or lower. Please aliquot to avoid repeated freeze thaw cycle. Reagents should be returned to -20°C storage immediately after use.

Applications

- ELISA Pair (Transfected lysate)

[Protocol Download](#)

Gene Info — DLX1

Entrez GeneID [1745](#)

Gene Name DLX1

Gene Alias -

Gene Description distal-less homeobox 1

Omim ID [600029](#)

Gene Ontology [Hyperlink](#)

Gene Summary This gene encodes a member of a homeobox transcription factor gene family similar to the Drosophila distal-less gene. The encoded protein is localized to the nucleus where it may function as a transcriptional regulator of signals from multiple TGF- β superfamily members. The encoded protein may play a role in the control of craniofacial patterning and the differentiation and survival of inhibitory neurons in the forebrain. This gene is located in a tail-to-tail configuration with another member of the family on the long arm of chromosome 2. Alternatively spliced transcript variants encoding different isoforms have been described. [provided by RefSeq]

Other Designations OTTHUMP00000082494|OTTHUMP00000082497|distal-less homeobox 1

Disease

- [Attention Deficit Disorder with Hyperactivity](#)
- [Autistic Disorder](#)
- [Cleft Lip](#)
- [Cleft Palate](#)
- [Genetic Predisposition to Disease](#)
- [NARP](#)
- [Schizophrenia](#)