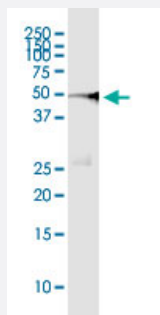


# SEPT1 (Human) IP-WB Antibody Pair

Catalog # H00001731-PW3

Size 1 Set

## Applications



Immunoprecipitation of SEPT1 transfected lysate using rabbit polyclonal anti-SEPT1 and Protein A Magnetic Bead ([U0007](#)), and immunoblotted with mouse purified polyclonal anti-SEPT1.

## Specification

<b>Product Description</b>	This IP-WB antibody pair set comes with one antibody for immunoprecipitation and another to detect the precipitated protein in western blot.
<b>Reactivity</b>	Human
<b>Quality Control Testing</b>	Immunoprecipitation-Western Blot (IP-WB) Immunoprecipitation of SEPT1 transfected lysate using rabbit polyclonal anti-SEPT1 and Protein A Magnetic Bead ( <a href="#">U0007</a> ), and immunoblotted with mouse purified polyclonal anti-SEPT1.
<b>Supplied Product</b>	Antibody pair set content: 1. Antibody pair for IP: rabbit polyclonal anti-SEPT1 (300 ul) 2. Antibody pair for WB: mouse purified polyclonal anti-SEPT1 (50 ug)
<b>Storage Instruction</b>	Store reagents of the antibody pair set at -20°C or lower. Please aliquot to avoid repeated freeze thaw cycle. Reagents should be returned to -20°C storage immediately after use.

## Applications

- Immunoprecipitation-Western Blot

[Protocol Download](#)

## Gene Info — SEPT1

**Entrez GeneID** [1731](#)**Gene Name** SEPT1**Gene Alias** DIFF6, LARP, MGC20394, PNUTL3, SEP1**Gene Description** septin 1**Gene Ontology** [Hyperlink](#)

**Gene Summary** This gene is a member of the septin family of GTPases. Members of this family are required for cytokinesis. This gene encodes a protein associated with the tau-based paired helical filament core, and may contribute to the formation of neurofibrillary tangles in Alzheimer's disease. [provided by RefSeq]

**Other Designations** differentiation 6 (deoxyguanosine triphosphate triphosphohydrolase)|serologically defined breast cancer antigen NY-BR-24