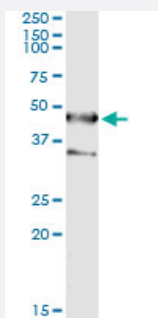


SEPT1 (Human) IP-WB Antibody Pair

Catalog # H00001731-PW2

Size 1 Set

Applications



Immunoprecipitation of SEPT1 transfected lysate using mouse monoclonal anti-SEPT1 and Protein A Magnetic Bead ([U0007](#)), and immunoblotted with rabbit polyclonal anti-SEPT1.

Specification

Product Description

This IP-WB antibody pair set comes with one antibody for immunoprecipitation and another to detect the precipitated protein in western blot.

Reactivity

Human

Quality Control Testing

Immunoprecipitation-Western Blot (IP-WB)

Immunoprecipitation of SEPT1 transfected lysate using mouse monoclonal anti-SEPT1 and Protein A Magnetic Bead ([U0007](#)), and immunoblotted with rabbit polyclonal anti-SEPT1.

Supplied Product

Antibody pair set content:

1. Antibody pair for IP: mouse monoclonal anti-SEPT1 (300 ug)
2. Antibody pair for WB: rabbit polyclonal anti-SEPT1 (50 ul)

Storage Instruction

Store reagents of the antibody pair set at -20°C or lower. Please aliquot to avoid repeated freeze thaw cycle. Reagents should be returned to -20°C storage immediately after use.

Applications

- Immunoprecipitation-Western Blot

[Protocol Download](#)

Gene Info — SEPT1

Entrez GeneID [1731](#)**Gene Name** SEPT1**Gene Alias** DIFF6, LARP, MGC20394, PNUTL3, SEP1**Gene Description** septin 1**Gene Ontology** [Hyperlink](#)

Gene Summary This gene is a member of the septin family of GTPases. Members of this family are required for cytokinesis. This gene encodes a protein associated with the tau-based paired helical filament core, and may contribute to the formation of neurofibrillary tangles in Alzheimer's disease. [provided by RefSeq]

Other Designations differentiation 6 (deoxyguanosine triphosphate triphosphohydrolase)|serologically defined breast cancer antigen NY-BR-24