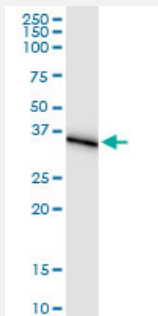


AKR1C1 (Human) IP-WB Antibody Pair

Catalog # H00001645-PW1

Size 1 Set

Applications



Immunoprecipitation of AKR1C1 transfected lysate using rabbit polyclonal anti-AKR1C1 and Protein A Magnetic Bead ([U0007](#)), and immunoblotted with mouse purified polyclonal anti-AKR1C1.

Specification

Product Description	This IP-WB antibody pair set comes with one antibody for immunoprecipitation and another to detect the precipitated protein in western blot.
Reactivity	Human
Interspecies Antigen Sequence	Rat (69%)
Quality Control Testing	Immunoprecipitation-Western Blot (IP-WB) Immunoprecipitation of AKR1C1 transfected lysate using rabbit polyclonal anti-AKR1C1 and Protein A Magnetic Bead (U0007), and immunoblotted with mouse purified polyclonal anti-AKR1C1.
Supplied Product	Antibody pair set content: 1. Antibody pair for IP: rabbit polyclonal anti-AKR1C1 (300 ul) 2. Antibody pair for WB: mouse purified polyclonal anti-AKR1C1 (50 ug)
Storage Instruction	Store reagents of the antibody pair set at -20°C or lower. Please aliquot to avoid repeated freeze thaw cycle. Reagents should be returned to -20°C storage immediately after use.

Applications

- Immunoprecipitation-Western Blot

[Protocol Download](#)

Gene Info — AKR1C1

Entrez GeneID [1645](#)

Gene Name AKR1C1

Gene Alias 2-ALPHA-HSD, 20-ALPHA-HSD, C9, DD1, DDH, DDH1, H-37, HAKRC, MBAB, MGC8954

Gene Description aldo-keto reductase family 1, member C1 (dihydrodiol dehydrogenase 1; 20-alpha (3-alpha)-hydroxysteroid dehydrogenase)

Omim ID [600449](#)

Gene Ontology [Hyperlink](#)

Gene Summary This gene encodes a member of the aldo/keto reductase superfamily, which consists of more than 40 known enzymes and proteins. These enzymes catalyze the conversion of aldehydes and ketones to their corresponding alcohols by utilizing NADH and/or NADPH as cofactors. The enzymes display overlapping but distinct substrate specificity. This enzyme catalyzes the reaction of progesterone to the inactive form 20-alpha-hydroxy-progesterone. This gene shares high sequence identity with three other gene members and is clustered with those three genes at chromosome 10p15-p14. [provided by RefSeq]

Other Designations 20 alpha-hydroxysteroid dehydrogenase|OTTHUMP00000018992|aldo-keto reductase C|aldo-keto reductase family 1, member C1|chlordecone reductase homolog|dihydrodiol dehydrogenase 1|dihydrodiol dehydrogenase isoform DD1|hepatic dihydrodiol dehydrogenase|trans-

Pathway

- [Metabolism of xenobiotics by cytochrome P450](#)

Disease

- [Alzheimer Disease](#)
- [Breast Neoplasms](#)
- [Genetic Predisposition to Disease](#)
- [Lung Neoplasms](#)

- [Lymphoma](#)