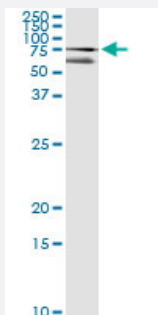


# CUX1 (Human) IP-WB Antibody Pair

Catalog # H00001523-PW2

Size 1 Set

## Applications



Immunoprecipitation of CUX1 transfected lysate using mouse monoclonal anti-CUX1 and Protein A Magnetic Bead ([U0007](#)), and immunoblotted with rabbit polyclonal anti-CUX1.

## Specification

<b>Product Description</b>	This IP-WB antibody pair set comes with one antibody for immunoprecipitation and another to detect the precipitated protein in western blot.
<b>Reactivity</b>	Human
<b>Interspecies Antigen Sequence</b>	Rat (17%)
<b>Quality Control Testing</b>	Immunoprecipitation-Western Blot (IP-WB) Immunoprecipitation of CUX1 transfected lysate using mouse monoclonal anti-CUX1 and Protein A Magnetic Bead ( <a href="#">U0007</a> ), and immunoblotted with rabbit polyclonal anti-CUX1.
<b>Supplied Product</b>	Antibody pair set content: 1. Antibody pair for IP: mouse monoclonal anti-CUX1 (300 ug) 2. Antibody pair for WB: rabbit polyclonal anti-CUX1 (50 ul)
<b>Storage Instruction</b>	Store reagents of the antibody pair set at -20°C or lower. Please aliquot to avoid repeated freeze thaw cycle. Reagents should be returned to -20°C storage immediately after use.

## Applications

- Immunoprecipitation-Western Blot

[Protocol Download](#)

## Gene Info — CUX1

Entrez GeneID	<a href="#">1523</a>
Gene Name	CUX1
Gene Alias	CASP, CDP, CDP/Cut, CDP1, COY1, CUTL1, CUX, Clox, Cux/CDP, GOLIM6, Nbla10317, p100, p110, p200, p75
Gene Description	cut-like homeobox 1
Omim ID	<a href="#">116896</a>
Gene Ontology	<a href="#">Hyperlink</a>
Gene Summary	The protein encoded by this gene is a member of the homeodomain family of DNA binding proteins. It may regulate gene expression, morphogenesis, and differentiation and it may also play a role in the cell cycle progression. Several alternatively spliced transcript variants of this gene have been described, but the full-length nature of some of these variants has not been determined. [provided by RefSeq]
Other Designations	cut homeobox cut homolog cut-like 1, CCAAT displacement protein golgi integral membrane protein 6 putative protein product of Nbla10317

## Disease

- [Tobacco Use Disorder](#)