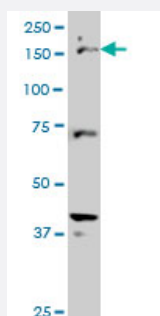


CUTL1 monoclonal antibody (M02), clone 2D10

Catalog # H00001523-M02

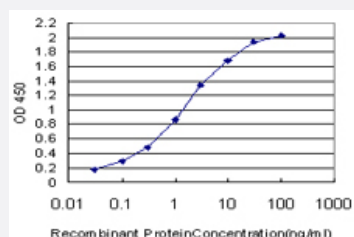
Size 100 ug

Applications



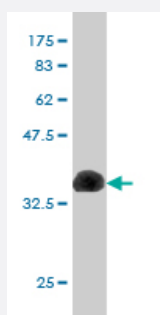
Western Blot (Cell lysate)

CUTL1 monoclonal antibody (M02), clone 2D10 Western Blot analysis of CUTL1 expression in HeLa S3 NE (Cat # L013V3).



Sandwich ELISA (Recombinant protein)

Detection limit for recombinant GST tagged CUTL1 is approximately 0.03ng/ml as a capture antibody.



Western Blot detection against Immunogen (36.63 KDa) .

Specification

Product Description

Mouse monoclonal antibody raised against a partial recombinant CUTL1.

Immunogen	CUTL1 (NP_001904.2, 521 a.a. ~ 620 a.a) partial recombinant protein with GST tag. MW of the GST tag alone is 26 KDa.
Sequence	AENRLAQHTLQALQSELDLRLADNIKLFKIKFLQSYPGRGSGSDDTELRYSSQYEERLDPFSSFSKRERQRKYLSPWDKATLSMGRVLVLSNKMARTI
Host	Mouse
Reactivity	Human
Interspecies Antigen Sequence	Rat (50)
Isotype	IgG1 Kappa
Quality Control Testing	Antibody Reactive Against Recombinant Protein. Western Blot detection against Immunogen (36.63 KDa) .
Storage Buffer	In 1x PBS, pH 7.4
Storage Instruction	Store at -20°C or lower. Aliquot to avoid repeated freezing and thawing.

Applications

- Western Blot (Cell lysate)

CUTL1 monoclonal antibody (M02), clone 2D10 Western Blot analysis of CUTL1 expression in Hela S3 NE (Cat # L013V3).

[Protocol Download](#)

- Western Blot (Recombinant protein)

[Protocol Download](#)

- Sandwich ELISA (Recombinant protein)

Detection limit for recombinant GST tagged CUTL1 is approximately 0.03ng/ml as a capture antibody.

[Protocol Download](#)

- ELISA

Gene Info — CUX1

Entrez GeneID [1523](#)

GeneBank Accession#	NM_001913
Protein Accession#	NP_001904.2
Gene Name	CUX1
Gene Alias	CASP, CDP, CDP/Cut, CDP1, COY1, CUTL1, CUX, Clox, Cux/CDP, GOLIM6, Nbla10317, p100, p110, p200, p75
Gene Description	cut-like homeobox 1
Omim ID	116896
Gene Ontology	Hyperlink
Gene Summary	The protein encoded by this gene is a member of the homeodomain family of DNA binding proteins. It may regulate gene expression, morphogenesis, and differentiation and it may also play a role in the cell cycle progression. Several alternatively spliced transcript variants of this gene have been described, but the full-length nature of some of these variants has not been determined. [provided by RefSeq]
Other Designations	cut homeobox cut homolog cut-like 1, CCAAT displacement protein golgi integral membrane protein 6 putative protein product of Nbla10317

Disease

- [Tobacco Use Disorder](#)