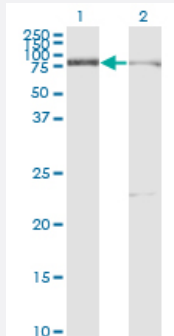


CUTL1 monoclonal antibody (M01), clone 2A10

Catalog # H00001523-M01

Size 100 ug

Applications

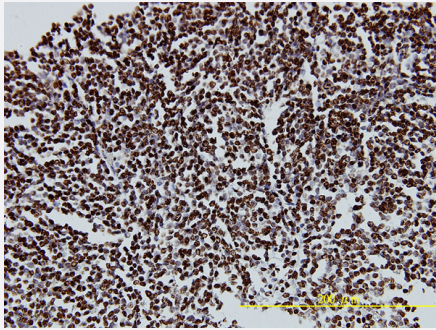


Western Blot (Transfected lysate)

Western Blot analysis of CUX1 expression in transfected 293T cell line by CUTL1 monoclonal antibody (M01), clone 2A10.

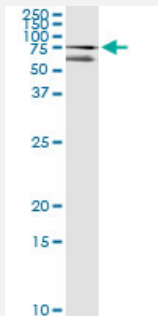
Lane 1: CUX1 transfected lysate (77.2 KDa).

Lane 2: Non-transfected lysate.



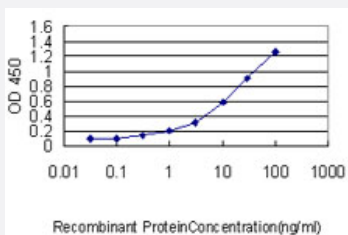
Immunohistochemistry (Formalin/PFA-fixed paraffin-embedded sections)

Immunoperoxidase of monoclonal antibody to CUTL1 on formalin-fixed paraffin-embedded human malignant lymphoma, diffuse large B tissue. [antibody concentration 5 ug/ml]



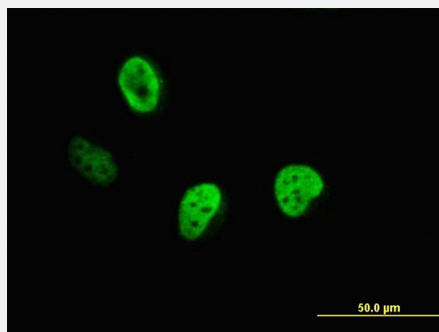
Immunoprecipitation

Immunoprecipitation of CUX1 transfected lysate using anti-CUX1 monoclonal antibody and Protein A Magnetic Bead, and immunoblotted with CUX1 MaxPab rabbit polyclonal antibody.



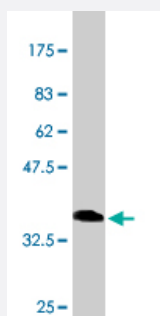
Sandwich ELISA (Recombinant protein)

Detection limit for recombinant GST tagged CUTL1 is approximately 0.03 ng/ml as a capture antibody.



Immunofluorescence

Immunofluorescence of monoclonal antibody to CUTL1 on HeLa cell. [antibody concentration 10 ug/ml]



Western Blot detection against Immunogen (36.63 KDa) .

Specification

Product Description	Mouse monoclonal antibody raised against a partial recombinant CUTL1.
Immunogen	CUTL1 (NP_001904.2, 521 a.a. ~ 620 a.a) partial recombinant protein with GST tag. MW of the GST tag alone is 26 KDa.
Sequence	AENRLAQHTLQALQSELSLRADNIKLFEEKFLQSYPGRSGSDDTELRYSSQYEERLDPFSSFSKRERQRKYLSPWDKATLSMGRVLVSNKMARTI
Host	Mouse
Reactivity	Human
Interspecies Antigen Sequence	Rat (50)
Isotype	IgG1 kappa
Quality Control Testing	Antibody Reactive Against Recombinant Protein. Western Blot detection against Immunogen (36.63 KDa) .
Storage Buffer	In 1x PBS, pH 7.4
Storage Instruction	Store at -20°C or lower. Aliquot to avoid repeated freezing and thawing.

Applications

- Western Blot (Transfected lysate)

Western Blot analysis of CUX1 expression in transfected 293T cell line by CUTL1 monoclonal antibody (M01), clone 2A10.

Lane 1: CUX1 transfected lysate(77.2 KDa).

Lane 2: Non-transfected lysate.

[Protocol Download](#)

- Western Blot (Recombinant protein)

[Protocol Download](#)

- Immunohistochemistry (Formalin/PFA-fixed paraffin-embedded sections)

Immunoperoxidase of monoclonal antibody to CUTL1 on formalin-fixed paraffin-embedded human malignant lymphoma, diffuse large B tissue. [antibody concentration 5 ug/ml]

[Protocol Download](#)

- Immunoprecipitation

Immunoprecipitation of CUX1 transfected lysate using anti-CUX1 monoclonal antibody and Protein A Magnetic Bead, and immunoblotted with CUX1 MaxPab rabbit polyclonal antibody.

[Protocol Download](#)

- Sandwich ELISA (Recombinant protein)

Detection limit for recombinant GST tagged CUTL1 is approximately 0.03ng/ml as a capture antibody.

[Protocol Download](#)

- ELISA

- Immunofluorescence

Immunofluorescence of monoclonal antibody to CUTL1 on HeLa cell. [antibody concentration 10 ug/ml]

Gene Info — CUX1

Entrez GeneID [1523](#)

GeneBank Accession# [NM_001913](#)

Protein Accession#	NP_001904.2
Gene Name	CUX1
Gene Alias	CASP, CDP, CDP/Cut, CDP1, COY1, CUTL1, CUX, Clox, Cux/CDP, GOLIM6, Nbla10317, p100, p110, p200, p75
Gene Description	cut-like homeobox 1
Omim ID	116896
Gene Ontology	Hyperlink
Gene Summary	The protein encoded by this gene is a member of the homeodomain family of DNA binding proteins. It may regulate gene expression, morphogenesis, and differentiation and it may also play a role in the cell cycle progression. Several alternatively spliced transcript variants of this gene have been described, but the full-length nature of some of these variants has not been determined. [provided by RefSeq]
Other Designations	cut homeobox cut homolog cut-like 1, CCAAT displacement protein golgi integral membrane protein 6 putative protein product of Nbla10317

Publication Reference

- [Prenatal low-dose methylmercury exposure causes premature neuronal differentiation and autism-like behaviors in a rodent model.](#)

Allison Loan, Joseph Wai-Hin Leung, David P Cook, Chelsea Ko, Barbara C Vanderhyden, Jing Wang , Hing Man Chan.
iScience 2023 Jan; 26(3):106093.

Application: IHC, Mouse, Mouse brain cortex

- [The corepressor CtBP2 is required for proper development of the mouse cerebral cortex.](#)

Esra Karaca, Xiaofei Li, Jakub Lewicki, Christina Neofytou, Nicolas Guérout, Fanie Barnabé-Heider, Ola Hermanson.
Molecular and Cellular Neurosciences 2020 Apr; 104:103481.

Application: IF, Mouse, Mouse cortex

- [Developmental and adult expression patterns of the G protein-coupled receptor GPR88 in the rat: Establishment of a dual nuclear-cytoplasmic localization.](#)

Massart R, Mignon V, Stanic J, Munoz-Tello P, Becker JA, Kieffer BL, Darmon M, Sokoloff P, Diaz J.
The Journal of Comparative Neurology 2016 Oct; 524(14):2776.

Application: IF, Human, Mouse, Rat, Brain

- [Neocortical Layer Formation of Human Developing Brains and Lissencephalies: Consideration of Layer-Specific Marker Expression.](#)

Saito T, Hanai S, Takashima S, Nakagawa E, Okazaki S, Inoue T, Miyata R, Hoshino K, Akashi T, Sasaki M, Goto YI, Hayashi M, Itoh M.

Cerebral Cortex (New York, N.Y. : 1991) 2011 Mar; 21(3):588.

Application: IHC-P, Human, Human brains

Disease

- [Tobacco Use Disorder](#)