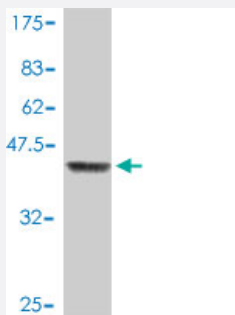


CUTL1 polyclonal antibody (A01)

Catalog # H00001523-A01

Size 50 uL

Applications



Western Blot detection against Immunogen (37.11 KDa) .

Specification

Product Description	Mouse polyclonal antibody raised against a partial recombinant CUTL1.
Immunogen	CUTL1 (NP_001904.2, 521 a.a. ~ 620 a.a) partial recombinant protein with GST tag.
Sequence	AENRLAQHTLQALQSELSLRADNIKLFEDIKFLQSYPGRGSGSDDTELRYSSQYEERLDPFSSFS KRERQRKYLSLSPWDKATLSMGRVLVSNKMARTI
Host	Mouse
Reactivity	Human
Interspecies Antigen Sequence	Rat (50)
Quality Control Testing	Antibody Reactive Against Recombinant Protein. Western Blot detection against Immunogen (37.11 KDa) .
Storage Buffer	50 % glycerol
Storage Instruction	Store at -20°C or lower. Aliquot to avoid repeated freezing and thawing.

Applications

- Western Blot (Recombinant protein)

[Protocol Download](#)

- ELISA

Gene Info — CUX1

Entrez GeneID [1523](#)

GeneBank Accession# [NM_001913](#)

Protein Accession# [NP_001904.2](#)

Gene Name CUX1

Gene Alias CASP, CDP, CDP/Cut, CDP1, COY1, CUTL1, CUX, Clox, Cux/CDP, GOLIM6, Nbla10317, p100, p110, p200, p75

Gene Description cut-like homeobox 1

Omim ID [116896](#)

Gene Ontology [Hyperlink](#)

Gene Summary The protein encoded by this gene is a member of the homeodomain family of DNA binding proteins. It may regulate gene expression, morphogenesis, and differentiation and it may also play a role in the cell cycle progression. Several alternatively spliced transcript variants of this gene have been described, but the full-length nature of some of these variants has not been determined. [provided by RefSeq]

Other Designations cut homeobox|cut homolog|cut-like 1, CCAAT displacement protein|golgi integral membrane protein 6|putative protein product of Nbla10317

Disease

- [Tobacco Use Disorder](#)