

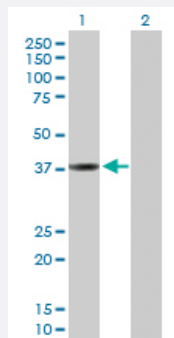
MaxPab®

CTSL1 purified MaxPab rabbit polyclonal antibody (D01P)

Catalog # H00001514-D01P

Size 100 ug

Applications



Western Blot (Transfected lysate)

Western Blot analysis of CTSL1 expression in transfected 293T cell line ([H00001514-T02](#)) by CTSL1 MaxPab polyclonal antibody.

Lane 1: CTSL1 transfected lysate(37.60 KDa).

Lane 2: Non-transfected lysate.

Specification

Product Description

Rabbit polyclonal antibody raised against a full-length human CTSL1 protein.

Immunogen

CTSL1 (NP_001903.1, 1 a.a. ~ 333 a.a) full-length human protein.

Sequence

MNPTLILAAFLGLIASATLTFDHSLEAQWTKWKAMHNRLYGMNEEGWRRRAVWEKNMKMIELHNQ
EYREGKHSFTMAMNAFGDMTSEEFQVMNGFQNRKPRKGKVFQEPLFYEAAPRSVDWREKGYV
TPVKNQGGQCGSCWAFSATGALEGQMFRKTGRLISLSEQNLVDCSGPQGNEGCNGGLMDYAFQY
VQDNGGLDSEESYPYEATEESCKYNPKYSVANDTGFDIPKQEKALMKAVATVGPISVAIDAGHE
SFLFYKEGIYFEPDCSSDMDHGVLVVGYGFFESTSDNNKYWLVKNSWGEEWGMGGYVKMAK
DRRNHCGIASAASYPTV

Host

Rabbit

Reactivity

Human, Mouse

Quality Control Testing

Antibody reactive against mammalian transfected lysate.

Storage Buffer

In 1x PBS, pH 7.4

Storage Instruction

Store at -20°C or lower. Aliquot to avoid repeated freezing and thawing.

Applications

- Western Blot (Transfected lysate)

Western Blot analysis of CTSL1 expression in transfected 293T cell line ([H00001514-T02](#)) by CTSL1 MaxPab polyclonal antibody.

Lane 1: CTSL1 transfected lysate(37.60 KDa).

Lane 2: Non-transfected lysate.

[Protocol Download](#)

Gene Info — CTSL1

Entrez GeneID [1514](#)

GeneBank Accession# [NM_001912.2](#)

Protein Accession# [NP_001903.1](#)

Gene Name CTSL1

Gene Alias CATL, CTSL, FLJ31037, MEP

Gene Description cathepsin L1

Omim ID [116880](#)

Gene Ontology [Hyperlink](#)

Gene Summary The protein encoded by this gene is a lysosomal cysteine proteinase that plays a major role in intracellular protein catabolism. Its substrates include collagen and elastin, as well as alpha-1 protease inhibitor, a major controlling element of neutrophil elastase activity. The encoded protein has been implicated in several pathologic processes, including myofibril necrosis in myopathies and in myocardial ischemia, and in the renal tubular response to proteinuria. This protein, which is a member of the peptidase C1 family, is a dimer composed of disulfide-linked heavy and light chains, both produced from a single protein precursor. At least two transcript variants encoding the same protein have been found for this gene. [provided by RefSeq]

Other Designations OTTHUMP00000021601|OTTHUMP00000021602|OTTHUMP00000063566|cathepsin L|major excreted protein

Pathway

- [Antigen processing and presentation](#)
- [Lysosome](#)