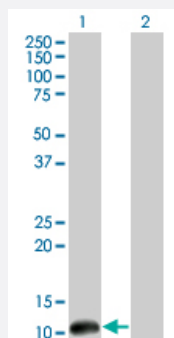


# CSTF3 monoclonal antibody (M01), clone 1D4

Catalog # H00001479-M01

Size 100 ug

## Applications

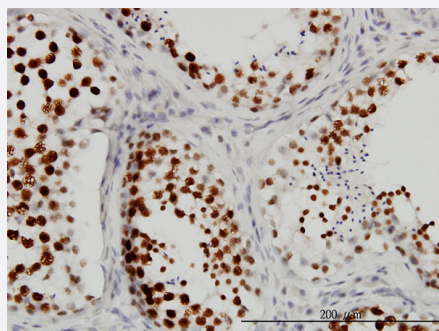


### Western Blot (Transfected lysate)

Western Blot analysis of CSTF3 expression in transfected 293T cell line by CSTF3 monoclonal antibody (M01), clone 1D4.

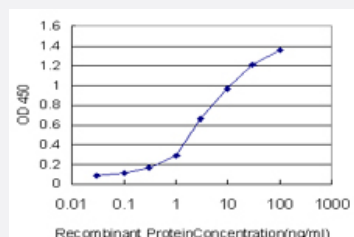
Lane 1: CSTF3 transfected lysate (11.44 kDa).

Lane 2: Non-transfected lysate.



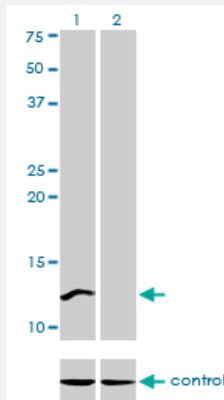
### Immunohistochemistry (Formalin/PFA-fixed paraffin-embedded sections)

Immunoperoxidase of monoclonal antibody to CSTF3 on formalin-fixed paraffin-embedded human testis. [antibody concentration 3 ug/ml]



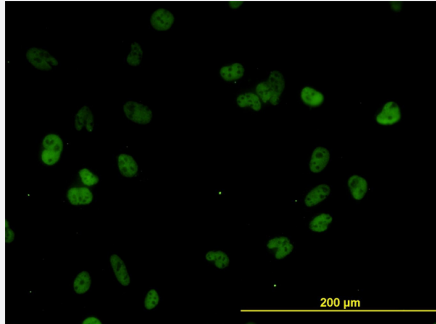
### Sandwich ELISA (Recombinant protein)

Detection limit for recombinant GST tagged CSTF3 is approximately 0.1 ng/ml as a capture antibody.



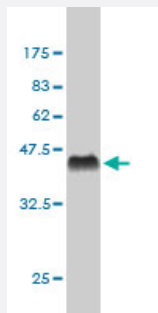
## RNAi Knockdown (Antibody validated)

Western blot analysis of CSTF3 over-expressed 293 cell line, cotransfected with CSTF3 Validated Chimera RNAi ( Cat # H00001479-R01V ) (Lane 2) or non-transfected control (Lane 1). Blot probed with CSTF3 monoclonal antibody (M01), clone 1D4 (Cat # H00001479-M01 ). GAPDH ( 36.1 kDa ) used as specificity and loading control.



## Immunofluorescence

Immunofluorescence of monoclonal antibody to CSTF3 on HeLa cell. [antibody concentration 10 ug/ml]



Western Blot detection against Immunogen (37.07 KDa) .

## Specification

<b>Product Description</b>	Mouse monoclonal antibody raised against a full length recombinant CSTF3.
<b>Immunogen</b>	CSTF3 (AAH09792, 1 a.a. ~ 103 a.a) full-length recombinant protein with GST tag. MW of the GST t ag alone is 26 KDa.
<b>Sequence</b>	MSGDGATEQAAEYVPEKVKKAEEKKLEENPYDLDAWSILIREAQNPIDKARKTYERLVAQFPSSG RFWKLYIEAEVTILFYFFLYQYCSIHCSRKQVRNIAN
<b>Host</b>	Mouse
<b>Reactivity</b>	Human
<b>Interspecies Antigen Sequence</b>	Mouse (96); Rat (96)

Isotype	IgG1 kappa
Quality Control Testing	Antibody Reactive Against Recombinant Protein. Western Blot detection against Immunogen (37.07 KDa) .
Storage Buffer	In 1x PBS, pH 7.4
Storage Instruction	Store at -20°C or lower. Aliquot to avoid repeated freezing and thawing.

## Applications

- Western Blot (Transfected lysate)

Western Blot analysis of CSTF3 expression in transfected 293T cell line by CSTF3 monoclonal antibody (M01), clone 1D4.

Lane 1: CSTF3 transfected lysate(11.44 KDa).

Lane 2: Non-transfected lysate.

[Protocol Download](#)

- Western Blot (Recombinant protein)

[Protocol Download](#)

- Immunohistochemistry (Formalin/PFA-fixed paraffin-embedded sections)

Immunoperoxidase of monoclonal antibody to CSTF3 on formalin-fixed paraffin-embedded human testis. [antibody concentration 3 ug/ml]

[Protocol Download](#)

- Sandwich ELISA (Recombinant protein)

Detection limit for recombinant GST tagged CSTF3 is approximately 0.1ng/ml as a capture antibody.

[Protocol Download](#)

- ELISA

- RNAi Knockdown (Antibody validated)

Western blot analysis of CSTF3 over-expressed 293 cell line, cotransfected with CSTF3 Validated Chimera RNAi ( Cat # H00001479-R01V ) (Lane 2) or non-transfected control (Lane 1). Blot probed with CSTF3 monoclonal antibody (M01), clone 1D4 (Cat # H00001479-M01 ). GAPDH ( 36.1 kDa ) used as specificity and loading control.

[Protocol Download](#)

- Immunofluorescence

Immunofluorescence of monoclonal antibody to CSTF3 on HeLa cell. [antibody concentration 10 ug/ml]

## Gene Info — CSTF3

Entrez GeneID	<a href="#">1479</a>
GeneBank Accession#	<a href="#">BC009792</a>
Protein Accession#	<a href="#">AAH09792</a>
Gene Name	CSTF3
Gene Alias	CSTF-77, MGC117398, MGC43001, MGC75122
Gene Description	cleavage stimulation factor, 3' pre-RNA, subunit 3, 77kDa
Omim ID	<a href="#">600367</a>
Gene Ontology	<a href="#">Hyperlink</a>
Gene Summary	The protein encoded by this gene is one of three (including CSTF1 and CSTF2) cleavage stimulation factors that combine to form the cleavage stimulation factor complex (CSTF). This complex is involved in the polyadenylation and 3' end cleavage of pre-mRNAs. The encoded protein functions as a homodimer and interacts directly with both CSTF1 and CSTF2 in the CSTF complex. Alternative splicing results in multiple transcript variants encoding different isoforms. [provided by RefSeq]
Other Designations	CSTF 77 kDa subunit cleavage stimulation factor subunit 3 cleavage stimulation factor subunit 3, isoform 1

## Publication Reference

- [Polyadenylation site-specific differences in the activity of the neuronal  \$\beta\$ CstF-64 protein in PC-12 cells.](#)

Shankarling GS, Macdonald CC.

Gene 2013 Oct; 529(2):220.

Application: WB-Tr, Rat, PC-12 cells