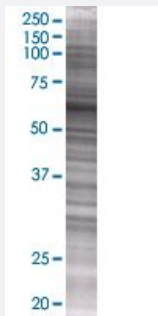


# CSTF2 293T Cell Transient Overexpression Lysate(Denatured)

Catalog # H00001478-T01

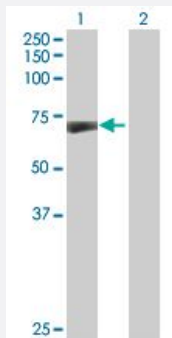
Size 100 uL

## Applications



### SDS-PAGE Gel

CSTF2 transfected lysate.



### Western Blot

Lane 1: CSTF2 transfected lysate ( 61 KDa)

Lane 2: Non-transfected lysate.

## Specification

Transfected Cell Line	293T
Plasmid	pCMV-CSTF2 full-length
Host	Human
Theoretical MW (kDa)	61
Interspecies Antigen Sequence	Mouse (93); Rat (93)

## Quality Control Testing

Transient overexpression cell lysate was tested with Anti-CSTF2 antibody ([H00001478-B01](#)) by Western Blots.  
SDS-PAGE Gel  
CSTF2 transfected lysate.  
Western Blot  
Lane 1: CSTF2 transfected lysate ( 61 KDa)  
Lane 2: Non-transfected lysate.

## Storage Buffer

1X Sample Buffer (50 mM Tris-HCl, 2% SDS, 10% glycerol, 300 mM 2-mercaptoethanol, 0.01% Bromophenol blue)

## Storage Instruction

Store at -80°C. Aliquot to avoid repeated freezing and thawing.

## Applications

- Western Blot

## Gene Info — CSTF2

## Entrez GeneID

[1478](#)

## GeneBank Accession#

[NM\\_001325](#)

## Protein Accession#

[NP\\_001316](#)

## Gene Name

CSTF2

## Gene Alias

CstF-64

## Gene Description

cleavage stimulation factor, 3' pre-RNA, subunit 2, 64kDa

## Omim ID

[600368](#)

## Gene Ontology

[Hyperlink](#)

## Gene Summary

This gene encodes a nuclear protein with an RRM (RNA recognition motif) domain. The protein is a member of the cleavage stimulation factor (CSTF) complex that is involved in the 3' end cleavage and polyadenylation of pre-mRNAs. Specifically, this protein binds GU-rich elements within the 3'-untranslated region of mRNAs. [provided by RefSeq]

## Other Designations

CF-1 64 kDa subunit|OTTHUMP00000024310|betaCstF-64 variant 2|cleavage stimulation factor subunit 2|cleavage stimulation factor, 64kDa subunit