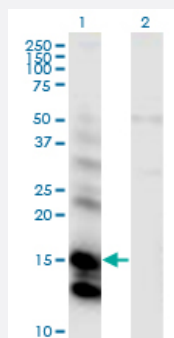


CST6 monoclonal antibody (M01), clone 2H8

Catalog # H00001474-M01

Size 100 ug

Applications

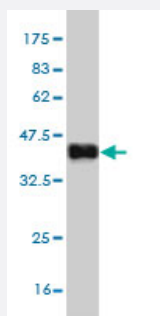


Western Blot (Transfected lysate)

Western Blot analysis of CST6 expression in transfected 293T cell line by CST6 monoclonal antibody (M01), clone 2H8.

Lane 1: CST6 transfected lysate (Predicted MW: 16.5 KDa).

Lane 2: Non-transfected lysate.



Western Blot detection against Immunogen (39.05 KDa) .

Specification

Product Description	Mouse monoclonal antibody raised against a full length recombinant CST6.
Immunogen	CST6 (AAH31334, 29 a.a. ~ 149 a.a) full-length recombinant protein with GST tag. MW of the GST tag alone is 26 KDa.
Sequence	RPQERMVGEIRDLSPPDPQVQKAAQAASYNMGSSNSIYYFRDTHIIKAQSQLVAGIKYFLTMEM GSTDCRKTRVTGDHVDLTTCPLAAGAQQEKLRCDFEVLVVPWQNSSQLLKHNVCVM
Host	Mouse
Reactivity	Human

Interspecies Antigen Sequence	Mouse (71); Rat (72)
Isotype	IgG2a Kappa
Quality Control Testing	Antibody Reactive Against Recombinant Protein. Western Blot detection against Immunogen (39.05 KDa) .
Storage Buffer	In 1x PBS, pH 7.4
Storage Instruction	Store at -20°C or lower. Aliquot to avoid repeated freezing and thawing.

Applications

- Western Blot (Transfected lysate)

Western Blot analysis of CST6 expression in transfected 293T cell line by CST6 monoclonal antibody (M01), clone 2H8.

Lane 1: CST6 transfected lysate (Predicted MW: 16.5 KDa).

Lane 2: Non-transfected lysate.

[Protocol Download](#)

- Western Blot (Recombinant protein)

[Protocol Download](#)

- ELISA

Gene Info — CST6

Entrez GeneID	1474
GeneBank Accession#	BC031334
Protein Accession#	AAH31334
Gene Name	CST6
Gene Alias	-
Gene Description	cystatin E/M
Omim ID	601891
Gene Ontology	Hyperlink

Gene Summary

The cystatin superfamily encompasses proteins that contain multiple cystatin-like sequences. Some of the members are active cysteine protease inhibitors, while others have lost or perhaps never acquired this inhibitory activity. There are three inhibitory families in the superfamily, including the type 1 cystatins (stefins), type 2 cystatins and the kininogens. The type 2 cystatin proteins are a class of cysteine proteinase inhibitors found in a variety of human fluids and secretions, where they appear to provide protective functions. This gene encodes a cystatin from the type 2 family, which is down-regulated in metastatic breast tumor cells as compared to primary tumor cells. Loss of expression is likely associated with the progression of a primary tumor to a metastatic phenotype. [provided by RefSeq]

Other Designations

cystatin 6|cystatin M|cystatin M/E|cysteine proteinase inhibitor