

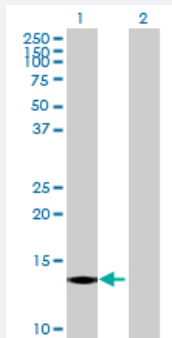
MaxPab®

CST6 MaxPab mouse polyclonal antibody (B01P)

Catalog # H00001474-B01P

Size 50 ug

Applications



Western Blot (Transfected lysate)

Western Blot analysis of CST6 expression in transfected 293T cell line ([H00001474-T01](#)) by CST6 MaxPab polyclonal antibody.

Lane 1: CST6 transfected lysate(16.39 KDa).

Lane 2: Non-transfected lysate.

Specification

Product Description	Mouse polyclonal antibody raised against a full-length human CST6 protein.
Immunogen	CST6 (NP_001314.1, 1 a.a. ~ 149 a.a) full-length human protein.
Sequence	MARSNLPLALGLALVAFCLLALPRDARARPQERMVGELRDLSPDDPQVQKAAQAAVASYNMGS NSIYYFRDTHIIKAQSQLVAGIKYFLTMEMGSTDCRKTRVTGDHVDLTTCPAAGAQQEKLRCDFEV LVVPWQNSSQLLKHNVCVQM
Host	Mouse
Reactivity	Human
Interspecies Antigen Sequence	Mouse (69); Rat (70)
Quality Control Testing	Antibody reactive against mammalian transfected lysate.
Storage Buffer	In 1x PBS, pH 7.4
Storage Instruction	Store at -20°C or lower. Aliquot to avoid repeated freezing and thawing.

Applications

- Western Blot (Transfected lysate)

Western Blot analysis of CST6 expression in transfected 293T cell line ([H00001474-T01](#)) by CST6 MaxPab polyclonal antibody.

Lane 1: CST6 transfected lysate(16.39 KDa).

Lane 2: Non-transfected lysate.

[Protocol Download](#)

Gene Info — CST6

Entrez GeneID [1474](#)

GeneBank Accession# [NM_001323.2](#)

Protein Accession# [NP_001314.1](#)

Gene Name CST6

Gene Alias -

Gene Description cystatin E/M

Omim ID [601891](#)

Gene Ontology [Hyperlink](#)

Gene Summary

The cystatin superfamily encompasses proteins that contain multiple cystatin-like sequences. Some of the members are active cysteine protease inhibitors, while others have lost or perhaps never acquired this inhibitory activity. There are three inhibitory families in the superfamily, including the type 1 cystatins (stefins), type 2 cystatins and the kininogens. The type 2 cystatin proteins are a class of cysteine proteinase inhibitors found in a variety of human fluids and secretions, where they appear to provide protective functions. This gene encodes a cystatin from the type 2 family, which is down-regulated in metastatic breast tumor cells as compared to primary tumor cells. Loss of expression is likely associated with the progression of a primary tumor to a metastatic phenotype. [provided by RefSeq]

Other Designations cystatin 6|cystatin M|cystatin M/E|cysteine proteinase inhibitor