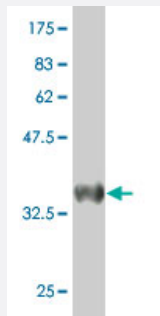


CST6 polyclonal antibody (A01)

Catalog # H00001474-A01

Size 50 uL

Applications



Western Blot detection against Immunogen (35.9 KDa) .

Specification

Product Description	Mouse polyclonal antibody raised against a partial recombinant CST6.
Immunogen	CST6 (NP_001314, 61 a.a. ~ 149 a.a) partial recombinant protein with GST tag.
Sequence	MGSNSIYYFRDTHIIKAQSQLVAGIKYFLTMEMGSTDCRKTRVTGDHVDLTTCPLAAGAQQEKLRC DFEVLVVPWQNSSQLLKHNCVQM
Host	Mouse
Reactivity	Human
Interspecies Antigen Sequence	Mouse (72); Rat (73)
Quality Control Testing	Antibody Reactive Against Recombinant Protein. Western Blot detection against Immunogen (35.9 KDa) .
Storage Buffer	50 % glycerol
Storage Instruction	Store at -20°C or lower. Aliquot to avoid repeated freezing and thawing.

Applications

- Western Blot (Recombinant protein)

[Protocol Download](#)

- ELISA

Gene Info — CST6

Entrez GeneID [1474](#)

GeneBank Accession# [NM_001323](#)

Protein Accession# [NP_001314](#)

Gene Name CST6

Gene Alias -

Gene Description cystatin E/M

Omim ID [601891](#)

Gene Ontology [Hyperlink](#)

Gene Summary

The cystatin superfamily encompasses proteins that contain multiple cystatin-like sequences. Some of the members are active cysteine protease inhibitors, while others have lost or perhaps never acquired this inhibitory activity. There are three inhibitory families in the superfamily, including the type 1 cystatins (stefins), type 2 cystatins and the kininogens. The type 2 cystatin proteins are a class of cysteine proteinase inhibitors found in a variety of human fluids and secretions, where they appear to provide protective functions. This gene encodes a cystatin from the type 2 family, which is down-regulated in metastatic breast tumor cells as compared to primary tumor cells. Loss of expression is likely associated with the progression of a primary tumor to a metastatic phenotype. [provided by RefSeq]

Other Designations cystatin 6|cystatin M|cystatin M/E|cysteine proteinase inhibitor