

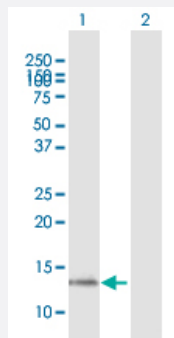
MaxPab®

# CST1 purified MaxPab mouse polyclonal antibody (B01P)

Catalog # H00001469-B01P

Size 50 ug

## Applications



### Western Blot (Transfected lysate)

Western Blot analysis of CST1 expression in transfected 293T cell line ([H00001469-T01](#)) by CST1 MaxPab polyclonal antibody.

Lane 1: CST1 transfected lysate(15.51 KDa).

Lane 2: Non-transfected lysate.

## Specification

Product Description	Mouse polyclonal antibody raised against a full-length human CST1 protein.
Immunogen	CST1 (NP_001889.2, 1 a.a. ~ 141 a.a) full-length human protein.
Sequence	MAQYLSTLLLLLATLAVALAWSPKEEDRIIPGGYNADLNDEWVQRALHFAISEYNKATKDDYYRRP LRVLRARQQTVGGVNYFFDVEVGRITCKSQPNLDTCAFHEQPELQKKQLCSFEIYVPWENRRS LVKSRCQES
Host	Mouse
Reactivity	Human
Quality Control Testing	Antibody reactive against mammalian transfected lysate.
Storage Buffer	In 1x PBS, pH 7.4
Storage Instruction	Store at -20°C or lower. Aliquot to avoid repeated freezing and thawing.

## Applications

- Western Blot (Transfected lysate)

Western Blot analysis of CST1 expression in transfected 293T cell line ([H00001469-T01](#)) by CST1 MaxPab polyclonal antibody.

Lane 1: CST1 transfected lysate(15.51 KDa).

Lane 2: Non-transfected lysate.

[Protocol Download](#)

## Gene Info — CST1

Entrez GeneID [1469](#)

GeneBank Accession# [NM\\_001898.2](#)

Protein Accession# [NP\\_001889.2](#)

Gene Name CST1

Gene Alias -

Gene Description cystatin SN

Omim ID [123855](#)

Gene Ontology [Hyperlink](#)

**Gene Summary**

The cystatin superfamily encompasses proteins that contain multiple cystatin-like sequences. Some of the members are active cysteine protease inhibitors, while others have lost or perhaps never acquired this inhibitory activity. There are three inhibitory families in the superfamily, including the type 1 cystatins (stefins), type 2 cystatins and the kininogens. The type 2 cystatin proteins are a class of cysteine proteinase inhibitors found in a variety of human fluids and secretions, where they appear to provide protective functions. The cystatin locus on chromosome 20 contains the majority of the type 2 cystatin genes and pseudogenes. This gene is located in the cystatin locus and encodes a cysteine proteinase inhibitor found in saliva, tears, urine, and seminal fluid. [provided by RefSeq]

**Other Designations**

OTTHUMP00000030444|OTTHUMP00000164184|cystatin 1|cystatin SA-1|cysteine proteinase inhibitor, type 2 family

## Publication Reference

- [Cystatin SN Upregulation in Patients with Seasonal Allergic Rhinitis.](#)

Imoto Y, Tokunaga T, Matsumoto Y, Hamada Y, Ono M, Yamada T, Ito Y, Arinami T, Okano M, Noguchi E, Fujieda S.  
PLoS One 2013 Aug; 8(8):e67057.

Application: IHC, Human, Nasal

- [Upregulation of the cysteine protease inhibitor, Cystatin SN, contributes to cell proliferation and cathepsin inhibition in gastric cancer.](#)

Choi EH, Kim JT, Kim JH, Kim SY, Song EY, Kim JW, Kim SY, Yeom YI, Kim IH, Lee HG.  
Clinica Chimica Acta 2009 Aug; 406(1-2):45.

Application: IHC-P, WB-Tr, Human, AGS cells, Human gastric cancer

## Disease

- [Diabetes Mellitus](#)
- [Genetic Predisposition to Disease](#)
- [Insulin Resistance](#)