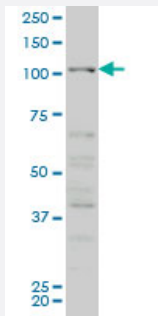


CSF1R monoclonal antibody (M02), clone 3G12

Catalog # H00001436-M02

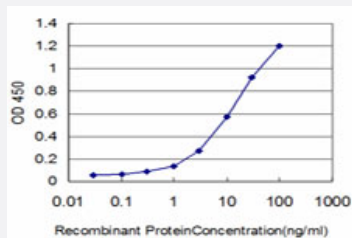
Size 100 ug

Applications



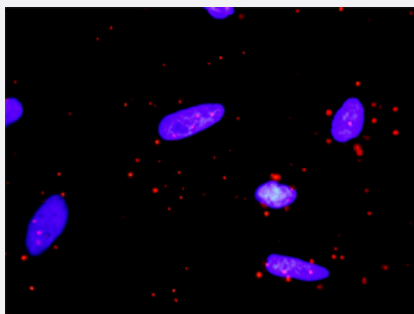
Western Blot (Cell lysate)

CSF1R monoclonal antibody (M02), clone 3G12 Western Blot analysis of CSF1R expression in HeLa S3 NE (Cat # L013V3).



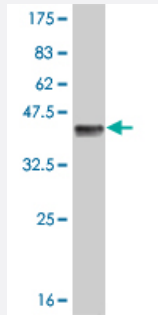
Sandwich ELISA (Recombinant protein)

Detection limit for recombinant GST tagged CSF1R is approximately 0.3ng/ml as a capture antibody.



In situ Proximity Ligation Assay (Cell)

Proximity Ligation Analysis of protein-protein interactions between PIK3R1 and CSF1R. HeLa cells were stained with anti-PIK3R1 rabbit purified polyclonal 1:1200 and anti-CSF1R mouse monoclonal antibody 1:50. Each red dot represents the detection of protein-protein interaction complex, and nuclei were counterstained with DAPI (blue).



Western Blot detection against Immunogen (36.63 KDa) .

Specification

Product Description	Mouse monoclonal antibody raised against a partial recombinant CSF1R.
Immunogen	CSF1R (AAH47521, 21 a.a. ~ 120 a.a) partial recombinant protein with GST tag. MW of the GST tag alone is 26 KDa.
Sequence	PVIEPSVPELVVKPGATVTLRCVGNLSVEWDGPPSPHWTLYSDGSSSILSTNNATFQNTGTyrCT EPGDPLGGSAAIHLVYKDPARPWNVLAQEVVVFED
Host	Mouse
Reactivity	Human
Interspecies Antigen Sequence	Mouse (73); Rat (79)
Isotype	IgG1 Kappa
Quality Control Testing	Antibody Reactive Against Recombinant Protein. Western Blot detection against Immunogen (36.63 KDa) .
Storage Buffer	In 1x PBS, pH 7.4
Storage Instruction	Store at -20°C or lower. Aliquot to avoid repeated freezing and thawing.

Applications

- Western Blot (Cell lysate)

CSF1R monoclonal antibody (M02), clone 3G12 Western Blot analysis of CSF1R expression in Hela S3 NE (Cat # L013V3).

[Protocol Download](#)

- Western Blot (Recombinant protein)

[Protocol Download](#)

- Sandwich ELISA (Recombinant protein)

Detection limit for recombinant GST tagged CSF1R is approximately 0.3ng/ml as a capture antibody.

[Protocol Download](#)

- ELISA

- In situ* Proximity Ligation Assay (Cell)

Proximity Ligation Analysis of protein-protein interactions between PIK3R1 and CSF1R. HeLa cells were stained with anti-PIK3R1 rabbit purified polyclonal 1:1200 and anti-CSF1R mouse monoclonal antibody 1:50. Each red dot represents the detection of protein-protein interaction complex, and nuclei were counterstained with DAPI (blue).

Gene Info — CSF1R

Entrez GeneID [1436](#)

GeneBank Accession# [BC047521](#)

Protein Accession# [AAH47521](#)

Gene Name CSF1R

Gene Alias C-FMS, CD115, CSFR, FIM2, FMS

Gene Description colony stimulating factor 1 receptor

Omim ID [164770](#)

Gene Ontology [Hyperlink](#)

Gene Summary The protein encoded by this gene is the receptor for colony stimulating factor 1, a cytokine which controls the production, differentiation, and function of macrophages. This receptor mediates most if not all of the biological effects of this cytokine. Ligand binding activates the receptor kinase through a process of oligomerization and transphosphorylation. The encoded protein is a tyrosine kinase transmembrane receptor and member of the CSF1/PDGF receptor family of tyrosine-protein kinases. Mutations in this gene have been associated with a predisposition to myeloid malignancy. The first intron of this gene contains a transcriptionally inactive ribosomal protein L7 processed pseudogene oriented in the opposite direction. [provided by RefSeq]

Other Designations CD115 antigen|FMS proto-oncogene|McDonough feline sarcoma viral (v-fms) oncogene homolog|macrophage colony stimulating factor I receptor|soluble CSF1R variant 1

Pathway

- [Cytokine-cytokine receptor interaction](#)
- [Endocytosis](#)
- [Hematopoietic cell lineage](#)
- [Pathways in cancer](#)

Disease

- [Asthma](#)
- [Genetic Predisposition to Disease](#)
- [Heart Defects](#)
- [Lung Neoplasms](#)
- [Myelodysplastic Syndromes](#)
- [Pancreatic cancer](#)
- [Pancreatic Neoplasms](#)
- [Pulmonary Disease](#)
- [Purpura](#)
- [Tobacco Use Disorder](#)
- [Urinary Bladder Neoplasms](#)
- [Werner syndrome](#)