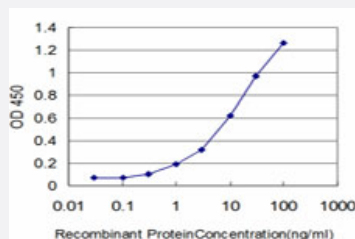


CSE1L monoclonal antibody (M06), clone 1C1

Catalog # H00001434-M06

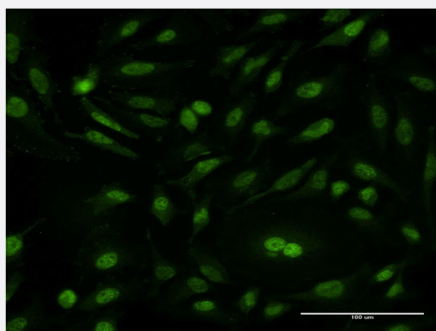
Size 100 ug

Applications



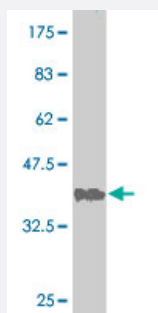
Sandwich ELISA (Recombinant protein)

Detection limit for recombinant GST tagged CSE1L is approximately 0.3ng/ml as a capture antibody.



Immunofluorescence

Immunofluorescence of monoclonal antibody to CSE1L on HeLa cell . [antibody concentration 10 ug/ml]



Western Blot detection against Immunogen (36.74 KDa) .

Specification

Product Description

Mouse monoclonal antibody raised against a partial recombinant CSE1L.

Immunogen	CSE1L (NP_001307, 872 a.a. ~ 971 a.a) partial recombinant protein with GST tag. MW of the GST tag alone is 26 KDa.
Sequence	LIGLFELPEDDTIPDEEHFIDIEDTPGYQTAFSQLAFAGKKEHDPVGQMVNNPKIHLAQSLHKLSTACPGRVPSMVSTSLNAEALQYLQGYLQAARVTLL
Host	Mouse
Reactivity	Human
Interspecies Antigen Sequence	Mouse (98); Rat (92)
Isotype	IgG1 kappa
Quality Control Testing	Antibody Reactive Against Recombinant Protein. Western Blot detection against Immunogen (36.74 KDa) .
Storage Buffer	In 1x PBS, pH 7.4
Storage Instruction	Store at -20°C or lower. Aliquot to avoid repeated freezing and thawing.

Applications

- Western Blot (Recombinant protein)

[Protocol Download](#)

- Sandwich ELISA (Recombinant protein)

Detection limit for recombinant GST tagged CSE1L is approximately 0.3ng/ml as a capture antibody.

[Protocol Download](#)

- ELISA

- Immunofluorescence

Immunofluorescence of monoclonal antibody to CSE1L on HeLa cell . [antibody concentration 10 ug/ml]

Gene Info — CSE1L

Entrez GeneID [1434](#)

GeneBank Accession# [NM_001316](#)

Protein Accession#	NP_001307
Gene Name	CSE1L
Gene Alias	CAS, CSE1, MGC117283, MGC130036, MGC130037, XPO2
Gene Description	CSE1 chromosome segregation 1-like (yeast)
Omim ID	601342
Gene Ontology	Hyperlink
Gene Summary	<p>Proteins that carry a nuclear localization signal (NLS) are transported into the nucleus by the importin-alpha/beta heterodimer. Importin-alpha binds the NLS, while importin-beta mediates translocation through the nuclear pore complex. After translocation, RanGTP binds importin-beta and displaces importin-alpha. Importin-alpha must then be returned to the cytoplasm, leaving the NLS protein behind. The protein encoded by this gene binds strongly to NLS-free importin-alpha, and this binding is released in the cytoplasm by the combined action of RANBP1 and RANGAP1. In addition, the encoded protein may play a role both in apoptosis and in cell proliferation. [provided by RefSeq]</p>
Other Designations	CSE1 chromosome segregation 1-like protein OTTHUMP00000043373 cellular apoptosis susceptibility protein chromosome segregation 1-like importin-alpha re-exporter