

CSE1L (Human) Matched Antibody Pair

Catalog # H00001434-AP41

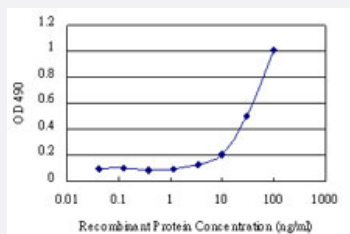
Size 1 Set

Applications

Spike and Recovery

ELISA spike and recovery of recombinant CSE1L protein in human plasma.

	Spike (10 ng/ml)	Spike (30 ng/ml)
Diluent control	8.85	30.33
Human plasma	7.18	29.54
Recovery	81%	97%



Sandwich ELISA detection sensitivity ranging from 3 ng/ml to 100 ng/ml.

Specification

Product Description

This antibody pair set comes with a matched antibody pair to detect and quantify the protein level of human CSE1L.

Reactivity

Human

Interspecies Antigen Sequence

Mouse (100%); Rat (100%)

Quality Control Testing

Standard curve using recombinant protein (H00001434-Q01) as an analyte.
Sandwich ELISA detection sensitivity ranging from 3 ng/ml to 100 ng/ml.

Supplied Product

Antibody pair set content:

1. Capture antibody: mouse monoclonal anti-CSE1L, IgG1 Kappa (100 ug)
2. Detection antibody: biotinylated mouse monoclonal anti-CSE1L, IgG1 Kappa (50 ug)

*Reagents are sufficient for at least 3-5 x 96 well plates using recommended protocols.

Storage Instruction

Store reagents of the antibody pair set at -20°C or lower. Please aliquot to avoid repeated freeze thaw cycle. Reagents should be returned to -20°C storage immediately after use.

Applications

- ELISA Pair (Recombinant protein)

[Protocol Download](#)

- Spike and Recovery

Gene Info — CSE1L

Entrez GeneID[1434](#)**Gene Name**

CSE1L

Gene Alias

CAS, CSE1, MGC117283, MGC130036, MGC130037, XPO2

Gene Description

CSE1 chromosome segregation 1-like (yeast)

Omim ID[601342](#)**Gene Ontology**[Hyperlink](#)**Gene Summary**

Proteins that carry a nuclear localization signal (NLS) are transported into the nucleus by the importin-alpha/beta heterodimer. Importin-alpha binds the NLS, while importin-beta mediates translocation through the nuclear pore complex. After translocation, RanGTP binds importin-beta and displaces importin-alpha. Importin-alpha must then be returned to the cytoplasm, leaving the NLS protein behind. The protein encoded by this gene binds strongly to NLS-free importin-alpha, and this binding is released in the cytoplasm by the combined action of RANBP1 and RANGAP1. In addition, the encoded protein may play a role both in apoptosis and in cell proliferation. [provided by RefSeq]

Other Designations

CSE1 chromosome segregation 1-like protein|OTTHUMP00000043373|cellular apoptosis susceptibility protein|chromosome segregation 1-like|importin-alpha re-exporter