

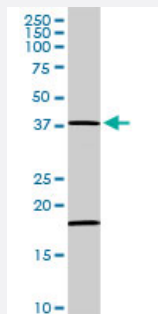
MaxPab®

MAPK14 purified MaxPab rabbit polyclonal antibody (D01P)

Catalog # H00001432-D01P

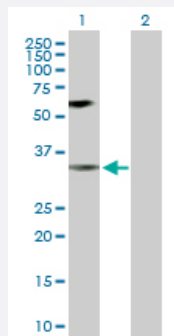
Size 100 ug

Applications



Western Blot (Tissue lysate)

MAPK14 MaxPab rabbit polyclonal antibody. Western Blot analysis of MAPK14 expression in human placenta.

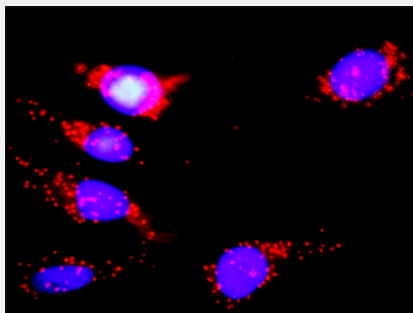


Western Blot (Transfected lysate)

Western Blot analysis of MAPK14 expression in transfected 293T cell line ([H00001432-T02](#)) by MAPK14 MaxPab polyclonal antibody.

Lane 1: MAPK14 transfected lysate(41.30 KDa).

Lane 2: Non-transfected lysate.



In situ Proximity Ligation Assay (Cell)

Proximity Ligation Analysis of protein-protein interactions between MAPK14 and EGFR. HeLa cells were stained with anti-MAPK14 rabbit purified polyclonal 1:1200 and anti-EGFR mouse purified polyclonal antibody 1:50. Each red dot represents the detection of protein-protein interaction complex, and nuclei were counterstained with DAPI (blue).

Specification

Product Description

Rabbit polyclonal antibody raised against a full-length human MAPK14 protein.

Immunogen	MAPK14 (NP_620581.1, 1 a.a. ~ 360 a.a) full-length human protein.
Sequence	MSQERPTFYRQELNKTWEVPERYQNLSPVGSYGAYGSVCAAFDTKTGLRVAVKKLSRPFQSIIHA KRTYRELRLKKHMKHENVIGLLDVFTPARSLEEFNDVYLVTHLMGADLNNIVKCQKLTDDHVQFLIY QILRGLKYIHSADIIHRDLKPSNLAVNEDCELKILDFGLARHTDDEMTGYVATRWRAPPEIMLNWMH YNQTVDIWSVGCIMAELLTGRTLFPGTDHIDQLKLRLVGTPGAELLKKISSESARNYQSLTQMPK MNFANVFIGANPLAVDLLEKMLVLDSDKRITAAQALAHAYFAQYHDPDDEPVADPYDQSFESRDL LIDEWKSLTYDEVISFVPPPLDQEEMES
Host	Rabbit
Reactivity	Human
Quality Control Testing	Antibody reactive against mammalian transfected lysate.
Storage Buffer	In 1x PBS, pH 7.4
Storage Instruction	Store at -20°C or lower. Aliquot to avoid repeated freezing and thawing.

Applications

- Western Blot (Tissue lysate)

MAPK14 MaxPab rabbit polyclonal antibody. Western Blot analysis of MAPK14 expression in human placenta.

[Protocol Download](#)

- Western Blot (Transfected lysate)

Western Blot analysis of MAPK14 expression in transfected 293T cell line ([H00001432-T02](#)) by MAPK14 MaxPab polyclonal antibody.

Lane 1: MAPK14 transfected lysate(41.30 KDa).

Lane 2: Non-transfected lysate.

[Protocol Download](#)

- In situ* Proximity Ligation Assay (Cell)

Proximity Ligation Analysis of protein-protein interactions between MAPK14 and EGFR. HeLa cells were stained with anti-MAPK14 rabbit purified polyclonal 1:1200 and anti-EGFR mouse purified polyclonal antibody 1:50. Each red dot represents the detection of protein-protein interaction complex, and nuclei were counterstained with DAPI (blue).

Gene Info — MAPK14

Entrez GeneID [1432](#)

GeneBank Accession# [NM_139012](#)

Protein Accession#	NP_620581.1
Gene Name	MAPK14
Gene Alias	CSBP1, CSBP2, CSPB1, EXIP, Mxi2, PRKM14, PRKM15, RK, SAPK2A, p38, p38ALPHA
Gene Description	mitogen-activated protein kinase 14
Omim ID	600289
Gene Ontology	Hyperlink
Gene Summary	<p>The protein encoded by this gene is a member of the MAP kinase family. MAP kinases act as an integration point for multiple biochemical signals, and are involved in a wide variety of cellular processes such as proliferation, differentiation, transcription regulation and development. This kinase is activated by various environmental stresses and proinflammatory cytokines. The activation requires its phosphorylation by MAP kinase kinases (MKKs), or its autophosphorylation triggered by the interaction of MAP3K7IP1/TAB1 protein with this kinase. The substrates of this kinase include transcription regulator ATF2, MEF2C, and MAX, cell cycle regulator CDC25B, and tumor suppressor p53, which suggest the roles of this kinase in stress related transcription and cell cycle regulation, as well as in genotoxic stress response. Four alternatively spliced transcript variants of this gene encoding distinct isoforms have been reported. [provided by RefSeq]</p>
Other Designations	Csaids binding protein MAP kinase Mxi2 MAX-interacting protein 2 cytokine suppressive anti-inflammatory drug binding protein p38 MAP kinase p38 mitogen activated protein kinase p38alpha Exip stress-activated protein kinase 2A

Pathway

- [Amyotrophic lateral sclerosis \(ALS\)](#)
- [Epithelial cell signaling in Helicobacter pylori infection](#)
- [Fc epsilon RI signaling pathway](#)
- [GnRH signaling pathway](#)
- [Leukocyte transendothelial migration](#)
- [MAPK signaling pathway](#)
- [Neurotrophin signaling pathway](#)
- [T cell receptor signaling pathway](#)
- [Toll-like receptor signaling pathway](#)
- [VEGF signaling pathway](#)

Disease

- [Cardiovascular Diseases](#)
- [Diabetes Mellitus](#)
- [Disease Models](#)
- [Edema](#)
- [Genetic Predisposition to Disease](#)
- [HIV Infections](#)
- [Narcolepsy](#)
- [Obesity](#)
- [Ovarian Failure](#)
- [Polycystic Ovary Syndrome](#)
- [Puberty](#)
- [Schizophrenia](#)
- [Thrombophilia](#)
- [Tobacco Use Disorder](#)