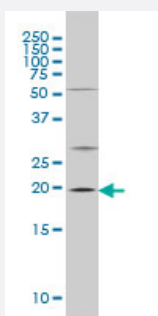


# CRYAB monoclonal antibody (M01), clone 1A10-1A4

Catalog # H00001410-M01

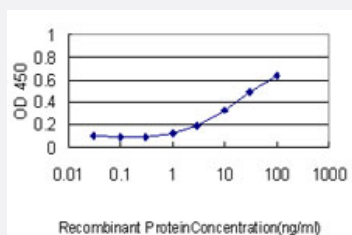
Size 100 ug

## Applications



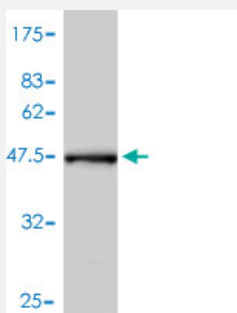
### Western Blot (Cell lysate)

CRYAB monoclonal antibody (M01), clone 1A10-1A4 Western Blot analysis of CRYAB expression in C32 ( Cat # L002V1 ).



### Sandwich ELISA (Recombinant protein)

Detection limit for recombinant GST tagged CRYAB is approximately 1ng/ml as a capture antibody.



Western Blot detection against Immunogen (44.99 KDa) .

## Specification

### Product Description

Mouse monoclonal antibody raised against a full length recombinant CRYAB.

<b>Immunogen</b>	CRYAB (AAH07008, 1 a.a. ~ 175 a.a) full-length recombinant protein with GST tag. MW of the GST tag alone is 26 KDa.
<b>Sequence</b>	MDIAIHHPWIRRPFFPFHSPSRLFDQFFGEHLLESDFPTSTSLSPFYLRPPSFLRAPSWFDTGLP EMRLEKDRFSVNLDVKHFSPEELKVKVLGDVIEVHGKHEERQDEHGFISREFHRKYRIPADVDPL TITSSLSSDGVLTVNGPRKRVSGPERTIPITREEKPAVTAAPKK
<b>Host</b>	Mouse
<b>Reactivity</b>	Human
<b>Isotype</b>	IgG1 kappa
<b>Quality Control Testing</b>	Antibody Reactive Against Recombinant Protein. Western Blot detection against Immunogen (44.99 KDa) .
<b>Storage Buffer</b>	In 1x PBS, pH 7.4
<b>Storage Instruction</b>	Store at -20°C or lower. Aliquot to avoid repeated freezing and thawing.

## Applications

- Western Blot (Cell lysate)

CRYAB monoclonal antibody (M01), clone 1A10-1A4 Western Blot analysis of CRYAB expression in C32 ( Cat # L002V1 ).

[Protocol Download](#)

- Western Blot (Recombinant protein)

[Protocol Download](#)

- Sandwich ELISA (Recombinant protein)

Detection limit for recombinant GST tagged CRYAB is approximately 1ng/ml as a capture antibody.

[Protocol Download](#)

- ELISA

## Gene Info — CRYAB

**Entrez GeneID** [1410](#)

**GeneBank Accession#** [BC007008](#)

Protein Accession#	<a href="#">AAH07008</a>
Gene Name	CRYAB
Gene Alias	CRYA2, CTPP2, HSPB5
Gene Description	crystallin, alpha B
Omim ID	<a href="#">123590 608810</a>
Gene Ontology	<a href="#">Hyperlink</a>
Gene Summary	<p>Crystallins are separated into two classes: taxon-specific, or enzyme, and ubiquitous. The latter class constitutes the major proteins of vertebrate eye lens and maintains the transparency and refractive index of the lens. Since lens central fiber cells lose their nuclei during development, these crystallins are made and then retained throughout life, making them extremely stable proteins. Mammalian lens crystallins are divided into alpha, beta, and gamma families; beta and gamma crystallins are also considered as a superfamily. Alpha and beta families are further divided into acidic and basic groups. Seven protein regions exist in crystallins: four homologous motifs, a connecting peptide, and N- and C-terminal extensions. Alpha crystallins are composed of two gene products: alpha-A and alpha-B, for acidic and basic, respectively. Alpha crystallins can be induced by heat shock and are members of the small heat shock protein (sHSP also known as the HSP20) family. They act as molecular chaperones although they do not renature proteins and release them in the fashion of a true chaperone; instead they hold them in large soluble aggregates. Post-translational modifications decrease the ability to chaperone. These heterogeneous aggregates consist of 30-40 subunits; the alpha-A and alpha-B subunits have a 3:1 ratio, respectively. Two additional functions of alpha crystallins are an autokinase activity and participation in the intracellular architecture. Alpha-A and alpha-B gene products are differentially expressed; alpha-A is preferentially restricted to the lens and alpha-B is expressed widely in many tissues and organs. Elevated expression of alpha-B crystallin occurs in many neurological diseases; a missense mutation cosegregated in a family with a desmin-related myopathy. [provided by RefSeq]</p>
Other Designations	alpha crystallin B chain heat-shock 20 kD like-protein

## Disease

- [Alzheimer disease](#)
- [Cognition](#)
- [Genetic Predisposition to Disease](#)
- [Multiple Sclerosis](#)