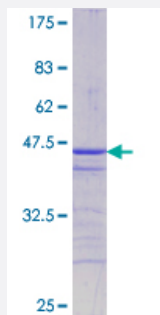


ATF2 (Human) Recombinant Protein (Q03)

Catalog # H00001386-Q03

Size 25 ug, 10 ug

Applications



Specification

Product Description	Human ATF2 partial ORF (NP_001871.2, 91 a.a. - 190 a.a.) recombinant protein with GST-tag at N-terminal.
Sequence	PFENEFKKASEDDIKKMPDLSPATPIIRSKIEEPSVVETTHQDSPLPHPESTTSDEKEVPLAQTA QPTSAIVRPASLQVPNVLLTSSDSSVIIQQAVP
Host	Wheat Germ (in vitro)
Theoretical MW (kDa)	36.63
Interspecies Antigen Sequence	Mouse (100); Rat (98)
Preparation Method	in vitro wheat germ expression system
Purification	Glutathione Sepharose 4 Fast Flow
Quality Control Testing	12.5% SDS-PAGE Stained with Coomassie Blue.
Storage Buffer	50 mM Tris-HCl, 10 mM reduced Glutathione, pH=8.0 in the elution buffer.
Storage Instruction	Store at -80°C. Aliquot to avoid repeated freezing and thawing.
Note	Best use within three months from the date of receipt of this protein.

Applications

- Enzyme-linked Immunoabsorbent Assay
- Western Blot (Recombinant protein)
- Antibody Production
- Protein Array

Gene Info — ATF2

Entrez GeneID [1386](#)

GeneBank Accession# [NM_001880](#)

Protein Accession# [NP_001871.2](#)

Gene Name ATF2

Gene Alias CRE-BP1, CREB2, HB16, MGC111558, TREB7

Gene Description activating transcription factor 2

Omim ID [123811](#)

Gene Ontology [Hyperlink](#)

Gene Summary This gene encodes a transcription factor that is a member of the leucine zipper family of DNA binding proteins. This protein binds to the cAMP-responsive element (CRE), an octameric palindromic sequence. The protein forms a homodimer or heterodimer with c-Jun and stimulates CRE-dependent transcription. The protein is also a histone acetyltransferase (HAT) that specifically acetylates histones H2B and H4 in vitro; thus it may represent a class of sequence-specific factors that activate transcription by direct effects on chromatin components. Additional transcript variants have been identified but their biological validity has not been determined. [provided by RefSeq]

Other Designations OTTHUMP00000163262|activating transcription factor 2 splice variant ATF2-var2|cAMP responsive element binding protein 2, formerly

Pathway

- [MAPK signaling pathway](#)

Disease

- [Bipolar Disorder](#)
- [Cardiovascular Diseases](#)
- [Diabetes Mellitus](#)
- [Edema](#)
- [Genetic Predisposition to Disease](#)
- [Schizophrenia](#)
- [Tobacco Use Disorder](#)