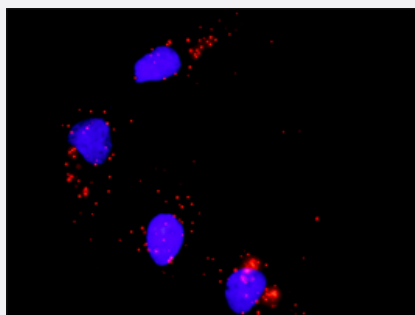


ATF2 monoclonal antibody (M09), clone 3A3

Catalog # H00001386-M09

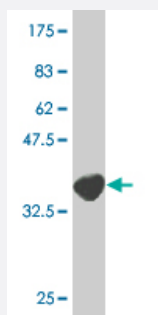
Size 100 ug

Applications



In situ Proximity Ligation Assay (Cell)

Proximity Ligation Analysis of protein-protein interactions between MAPK3 and ATF2. HeLa cells were stained with anti-MAPK3 rabbit purified polyclonal 1:1200 and anti-ATF2 mouse monoclonal antibody 1:50. Each red dot represents the detection of protein-protein interaction complex, and nuclei were counterstained with DAPI (blue).



Western Blot detection against Immunogen (37 KDa) .

Specification

Product Description	Mouse monoclonal antibody raised against a full length recombinant ATF2.
Immunogen	ATF2 (NP_001871, 91 a.a. ~ 190 a.a) full length recombinant protein with GST tag. MW of the GST tag alone is 26 KDa.
Sequence	PFENEFKKASEDDIKKMPDLDSPLATPIIRSKIEEPSVVETTHQDSPLPHPESTTSDEKEVPLAQTAQPTSAIVRPASLQVPNVLLTSSDSSVIIQQAVP*
Host	Mouse
Reactivity	Human

Interspecies Antigen Sequence	Mouse (100); Rat (98)
Isotype	IgG2a Kappa
Quality Control Testing	Antibody Reactive Against Recombinant Protein. Western Blot detection against Immunogen (37 KDa) .
Storage Buffer	In 1x PBS, pH 7.4
Storage Instruction	Store at -20°C or lower. Aliquot to avoid repeated freezing and thawing.

Applications

- Western Blot (Recombinant protein)

[Protocol Download](#)

- ELISA

- In situ* Proximity Ligation Assay (Cell)

Proximity Ligation Analysis of protein-protein interactions between MAPK3 and ATF2. HeLa cells were stained with anti-MAPK3 rabbit purified polyclonal 1:1200 and anti-ATF2 mouse monoclonal antibody 1:50. Each red dot represents the detection of protein-protein interaction complex, and nuclei were counterstained with DAPI (blue).

Gene Info — ATF2

Entrez GeneID	1386
GeneBank Accession#	NM_001880
Protein Accession#	NP_001871
Gene Name	ATF2
Gene Alias	CRE-BP1, CREB2, HB16, MGC111558, TREB7
Gene Description	activating transcription factor 2
Omim ID	123811
Gene Ontology	Hyperlink

Gene Summary

This gene encodes a transcription factor that is a member of the leucine zipper family of DNA binding proteins. This protein binds to the cAMP-responsive element (CRE), an octameric palindrome. The protein forms a homodimer or heterodimer with c-Jun and stimulates CRE-dependent transcription. The protein is also a histone acetyltransferase (HAT) that specifically acetylates histones H2B and H4 in vitro; thus it may represent a class of sequence-specific factors that activate transcription by direct effects on chromatin components. Additional transcript variants have been identified but their biological validity has not been determined. [provided by RefSeq]

Other Designations

OTTHUMP00000163262|activating transcription factor 2 splice variant ATF2-var2|cAMP responsive element binding protein 2, formerly

Pathway

- [MAPK signaling pathway](#)

Disease

- [Bipolar Disorder](#)
- [Cardiovascular Diseases](#)
- [Diabetes Mellitus](#)
- [Edema](#)
- [Genetic Predisposition to Disease](#)
- [Schizophrenia](#)
- [Tobacco Use Disorder](#)