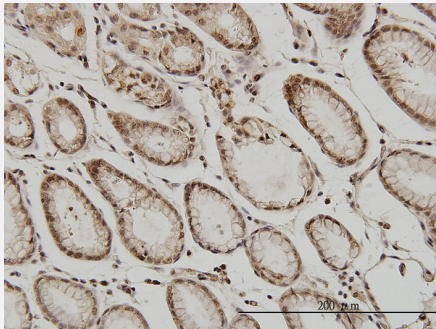


ATF2 monoclonal antibody (M02), clone 1E12

Catalog # H00001386-M02

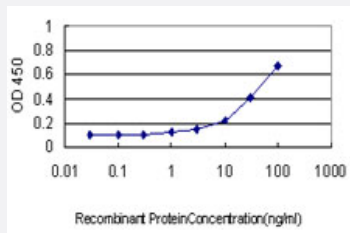
Size 100 ug

Applications



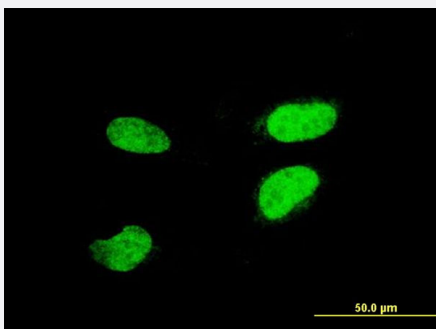
Immunohistochemistry (Formalin/PFA-fixed paraffin-embedded sections)

Immunoperoxidase of monoclonal antibody to ATF2 on formalin-fixed paraffin-embedded human stomach. [antibody concentration 3 ug/ml]



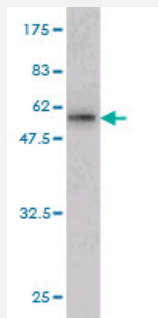
Sandwich ELISA (Recombinant protein)

Detection limit for recombinant GST tagged ATF2 is approximately 3ng/ml as a capture antibody.



Immunofluorescence

Immunofluorescence of monoclonal antibody to ATF2 on HeLa cell . [antibody concentration 10 ug/ml]



Western Blot detection against Immunogen (48.73 KDa) .

Specification

Product Description	Mouse monoclonal antibody raised against a full length recombinant ATF2.
Immunogen	ATF2 (AAH26175, 1 a.a. ~ 209 a.a) full-length recombinant protein with GST tag. MW of the GST tag alone is 26 KDa.
Sequence	MKFKLHVNSARQYKDLWNMSDDKPFLCTAPGCGQRFTNEDHLAVHKHKHEMTLKFGPARNDS VIVADQTPTRFLKNCEEVGLFNELASPFENEFFKKASEDDIKMPLDLSPLATPIIRSKIEEPSV ETTHQDSPLPHPESTTSDEKEVPLAQTAQPTSAIVRPASLQVQPNVLLTSSDSSVQQAVPSPTSS TVITQAPSSNRPIV
Host	Mouse
Reactivity	Human
Interspecies Antigen Sequence	Mouse (100); Rat (99)
Isotype	IgG1 Kappa
Quality Control Testing	Antibody Reactive Against Recombinant Protein. Western Blot detection against Immunogen (48.73 KDa) .
Storage Buffer	In 1x PBS, pH 7.4
Storage Instruction	Store at -20°C or lower. Aliquot to avoid repeated freezing and thawing.

Applications

- Western Blot (Recombinant protein)

[Protocol Download](#)

- Immunohistochemistry (Formalin/PFA-fixed paraffin-embedded sections)

Immunoperoxidase of monoclonal antibody to ATF2 on formalin-fixed paraffin-embedded human stomach. [antibody concentration 3 ug/ml]

[Protocol Download](#)

- Sandwich ELISA (Recombinant protein)

Detection limit for recombinant GST tagged ATF2 is approximately 3ng/ml as a capture antibody.

[Protocol Download](#)

- ELISA

- Immunofluorescence

Immunofluorescence of monoclonal antibody to ATF2 on HeLa cell . [antibody concentration 10 ug/ml]

Gene Info — ATF2

Entrez GeneID [1386](#)

GeneBank Accession# [BC026175](#)

Protein Accession# [AAH26175](#)

Gene Name ATF2

Gene Alias CRE-BP1, CREB2, HB16, MGC111558, TREB7

Gene Description activating transcription factor 2

Omim ID [123811](#)

Gene Ontology [Hyperlink](#)

Gene Summary This gene encodes a transcription factor that is a member of the leucine zipper family of DNA binding proteins. This protein binds to the cAMP-responsive element (CRE), an octameric palindromic sequence. The protein forms a homodimer or heterodimer with c-Jun and stimulates CRE-dependent transcription. The protein is also a histone acetyltransferase (HAT) that specifically acetylates histones H2B and H4 in vitro; thus it may represent a class of sequence-specific factors that activate transcription by direct effects on chromatin components. Additional transcript variants have been identified but their biological validity has not been determined. [provided by RefSeq]

Other Designations OTTHUMP00000163262[activating transcription factor 2 splice variant ATF2-var2][cAMP responsive element binding protein 2, formerly

Pathway

- [MAPK signaling pathway](#)

Disease

- [Bipolar Disorder](#)
- [Cardiovascular Diseases](#)
- [Diabetes Mellitus](#)
- [Edema](#)
- [Genetic Predisposition to Disease](#)
- [Schizophrenia](#)
- [Tobacco Use Disorder](#)