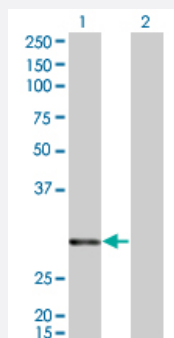


# ATF2 monoclonal antibody (M01), clone 4C12

Catalog # H00001386-M01

Size 100 ug

## Applications

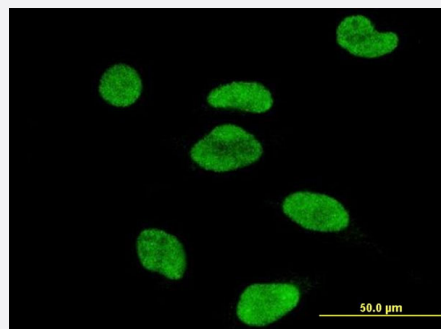


### Western Blot (Transfected lysate)

Western Blot analysis of ATF2 expression in transfected 293T cell line by ATF2 monoclonal antibody (M01), clone 4C12.

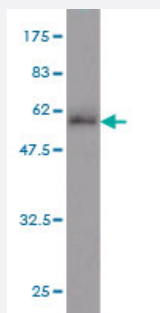
Lane 1: ATF2 transfected lysate(23.1 KDa).

Lane 2: Non-transfected lysate.



### Immunofluorescence

Immunofluorescence of monoclonal antibody to ATF2 on HeLa cell . [antibody concentration 10 ug/ml]



Western Blot detection against Immunogen (48.73 KDa) .

## Specification

### Product Description

Mouse monoclonal antibody raised against a full length recombinant ATF2.

<b>Immunogen</b>	ATF2 (AAH26175, 1 a.a. ~ 209 a.a) full-length recombinant protein with GST tag. MW of the GST tag alone is 26 KDa.
<b>Sequence</b>	MKFKLHVNSARQYKDLWNMSDDKPFLCTAPGCGQRFTNEDHLAVHKKHKHEMTLKFGPARNDS VIVADQTPTPTRFLKNCEEVGLFNELASPFENEFFKKASEDDIKKMPLDLSPLATPIIRSKIEEPSVV ETTHQDSPLPHPESTTSDEKEVPLAQTAQPTSAVRPASLQVPNVLLTSSDSSVIIQQAVPSPTSS TVITQAPSSNRPIV
<b>Host</b>	Mouse
<b>Reactivity</b>	Human
<b>Interspecies Antigen Sequence</b>	Mouse (100); Rat (99)
<b>Isotype</b>	IgG3 Kappa
<b>Quality Control Testing</b>	Antibody Reactive Against Recombinant Protein. Western Blot detection against Immunogen (48.73 KDa) .
<b>Storage Buffer</b>	In 1x PBS, pH 7.4
<b>Storage Instruction</b>	Store at -20°C or lower. Aliquot to avoid repeated freezing and thawing.

## Applications

- Western Blot (Transfected lysate)

Western Blot analysis of ATF2 expression in transfected 293T cell line by ATF2 monoclonal antibody (M01), clone 4C12.

Lane 1: ATF2 transfected lysate(23.1 KDa).

Lane 2: Non-transfected lysate.

[Protocol Download](#)

- Western Blot (Recombinant protein)

[Protocol Download](#)

- ELISA

- Immunofluorescence

Immunofluorescence of monoclonal antibody to ATF2 on HeLa cell . [antibody concentration 10 ug/ml]

## Gene Info — ATF2

Entrez GeneID	<a href="#">1386</a>
GeneBank Accession#	<a href="#">BC026175</a>
Protein Accession#	<a href="#">AAH26175</a>
Gene Name	ATF2
Gene Alias	CRE-BP1, CREB2, HB16, MGC111558, TREB7
Gene Description	activating transcription factor 2
Omim ID	<a href="#">123811</a>
Gene Ontology	<a href="#">Hyperlink</a>
Gene Summary	This gene encodes a transcription factor that is a member of the leucine zipper family of DNA binding proteins. This protein binds to the cAMP-responsive element (CRE), an octameric palindromic. The protein forms a homodimer or heterodimer with c-Jun and stimulates CRE-dependent transcription. The protein is also a histone acetyltransferase (HAT) that specifically acetylates histones H2B and H4 in vitro; thus it may represent a class of sequence-specific factors that activate transcription by direct effects on chromatin components. Additional transcript variants have been identified but their biological validity has not been determined. [provided by RefSeq]
Other Designations	OTTHUMP00000163262 activating transcription factor 2 splice variant ATF2-var2 cAMP responsive element binding protein 2, formerly

## Pathway

- [MAPK signaling pathway](#)

## Disease

- [Bipolar Disorder](#)
- [Cardiovascular Diseases](#)
- [Diabetes Mellitus](#)
- [Edema](#)
- [Genetic Predisposition to Disease](#)
- [Schizophrenia](#)

- [Tobacco Use Disorder](#)