

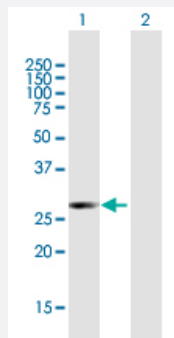
MaxPab®

ATF2 purified MaxPab rabbit polyclonal antibody (D01P)

Catalog # H00001386-D01P

Size 100 ug

Applications



Western Blot (Transfected lysate)

Western Blot analysis of ATF2 expression in transfected 293T cell line () by ATF2 MaxPab polyclonal antibody.

Lane 1: ATF2 transfected lysate (23.10 kDa).

Lane 2: Non-transfected lysate.

Specification

Product Description	Rabbit polyclonal antibody raised against a full-length human ATF2 protein.
Immunogen	ATF2 (AAH26175.1, 1 a.a. ~ 209 a.a) full-length human protein.
Sequence	MKFKLVNSARQYKDLWNMSDDKPFLCTAPGCGQRFTNEDHLAVHKKHEMTLKFGPARNDS VIVADQTPTPTRFLKNCEEVGLFNELASPFENEFFKASEDDIKMPLDLSPLATPIIRSKIEEPSV ETTHQDSPLPHPESTTSDEKEVPLAQTAQPTSAIVRPASLQVNVLLTSSDSSVIIQQAVPSPTSS TVITQAPSSNRPIV
Host	Rabbit
Reactivity	Human
Interspecies Antigen Sequence	Mouse (100); Rat (99)
Quality Control Testing	Antibody reactive against mammalian transfected lysate.
Storage Buffer	In 1x PBS, pH 7.4
Storage Instruction	Store at -20°C or lower. Aliquot to avoid repeated freezing and thawing.

Applications

- Western Blot (Transfected lysate)

Western Blot analysis of ATF2 expression in transfected 293T cell line () by ATF2 MaxPab polyclonal antibody.

Lane 1: ATF2 transfected lysate(23.10 KDa).

Lane 2: Non-transfected lysate.

[Protocol Download](#)

Gene Info — ATF2

Entrez GeneID [1386](#)

GeneBank Accession# [BC026175](#)

Protein Accession# [AAH26175.1](#)

Gene Name ATF2

Gene Alias CRE-BP1, CREB2, HB16, MGC111558, TREB7

Gene Description activating transcription factor 2

Omim ID [123811](#)

Gene Ontology [Hyperlink](#)

Gene Summary This gene encodes a transcription factor that is a member of the leucine zipper family of DNA binding proteins. This protein binds to the cAMP-responsive element (CRE), an octameric palindromic sequence. The protein forms a homodimer or heterodimer with c-Jun and stimulates CRE-dependent transcription. The protein is also a histone acetyltransferase (HAT) that specifically acetylates histones H2B and H4 in vitro; thus it may represent a class of sequence-specific factors that activate transcription by direct effects on chromatin components. Additional transcript variants have been identified but their biological validity has not been determined. [provided by RefSeq]

Other Designations OTTHUMP00000163262|activating transcription factor 2 splice variant ATF2-var2|cAMP responsive element binding protein 2, formerly

Pathway

- [MAPK signaling pathway](#)

Disease

- [Bipolar Disorder](#)
- [Cardiovascular Diseases](#)
- [Diabetes Mellitus](#)
- [Edema](#)
- [Genetic Predisposition to Disease](#)
- [Schizophrenia](#)
- [Tobacco Use Disorder](#)