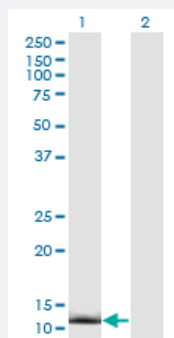


CRABP2 monoclonal antibody (M01), clone 4F2

Catalog # H00001382-M01

Size 100 ug

Applications

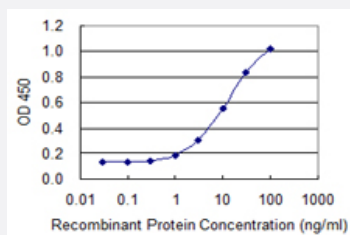


Western Blot (Transfected lysate)

Western Blot analysis of CRABP2 expression in transfected 293T cell line by CRABP2 monoclonal antibody (M01), clone 4F2.

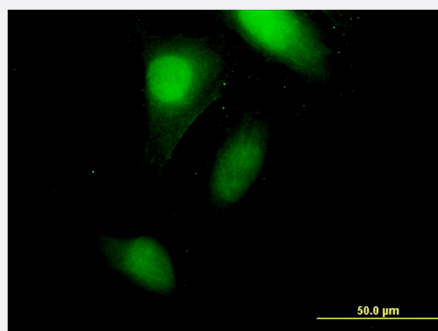
Lane 1: CRABP2 transfected lysate (15.7 kDa).

Lane 2: Non-transfected lysate.



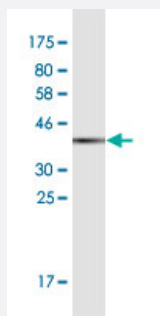
Sandwich ELISA (Recombinant protein)

Detection limit for recombinant GST tagged CRABP2 is 0.3 ng/ml as a capture antibody.



Immunofluorescence

Immunofluorescence of monoclonal antibody to CRABP2 on HeLa cell .
[antibody concentration 10 ug/ml]



Western Blot detection against Immunogen (42.1 KDa) .

Specification

Product Description	Mouse monoclonal antibody raised against a full-length recombinant CRABP2.
Immunogen	CRABP2 (NP_001869.1, 1 a.a. ~ 138 a.a) full-length recombinant protein with GST tag. MW of the GST tag alone is 26 KDa.
Sequence	MPNFSGNWKIIRSENFEECLKVLGVNVMRLRKIAVAAASKPAVEIKQEGDTFYKSTTVRTTEINFKV GEEFEEQTV DGRPCKSLVKWESENKMOVCEQKLLKGEGPKTSWTRELTNDGELILMTADDVVC TRVYVRE
Host	Mouse
Reactivity	Human
Interspecies Antigen Sequence	Mouse (93)
Isotype	IgG2a Kappa
Quality Control Testing	Antibody Reactive Against Recombinant Protein. Western Blot detection against Immunogen (42.1 KDa) .
Storage Buffer	In 1x PBS, pH 7.4
Storage Instruction	Store at -20°C or lower. Aliquot to avoid repeated freezing and thawing.

Applications

● Western Blot (Transfected lysate)

Western Blot analysis of CRABP2 expression in transfected 293T cell line by CRABP2 monoclonal antibody (M01), clone 4F2.

Lane 1: CRABP2 transfected lysate(15.7 KDa).

Lane 2: Non-transfected lysate.

[Protocol Download](#)

- Western Blot (Recombinant protein)

[Protocol Download](#)

- Sandwich ELISA (Recombinant protein)

Detection limit for recombinant GST tagged CRABP2 is 0.3 ng/ml as a capture antibody.

[Protocol Download](#)

- ELISA

- Immunofluorescence

Immunofluorescence of monoclonal antibody to CRABP2 on HeLa cell . [antibody concentration 10 ug/ml]

Gene Info — CRABP2

Entrez GeneID [1382](#)

GeneBank Accession# [NM_001878.2](#)

Protein Accession# [NP_001869.1](#)

Gene Name CRABP2

Gene Alias CRABP-II, RBP6

Gene Description cellular retinoic acid binding protein 2

Omim ID [180231](#)

Gene Ontology [Hyperlink](#)

Gene Summary A number of specific carrier proteins for members of the vitamin A family have been discovered. Cellular retinoic acid binding proteins (CRABP) are low molecular weight proteins whose precise function remains unknown. The inducibility of the CRABP2 gene suggests that this isoform is important in retinoic acid-mediated regulation of human skin growth and differentiation. It has been postulated that the CRABP2 gene is transcriptionally regulated by a newly synthesized regulatory protein. [provided by RefSeq]

Other Designations OTTHUMP00000038730|OTTHUMP00000038732|cellular retinoic acid-binding protein 2

Publication Reference

- [Downregulation of CRABP2 Inhibit the Tumorigenesis of Hepatocellular Carcinoma In Vivo and In Vitro.](#)

Qingmin Chen, Ludong Tan, Zhe Jin, Yahui Liu, Ze Zhang.

BioMed Research International 2020 Jun; 2020:3098327.

Application: IF, Human, HepG2 cells

- [CRABP2 regulates invasion and metastasis of breast cancer through hippo pathway dependent on ER status.](#)

Feng X, Zhang M, Wang B, Zhou C, Mu Y, Li J, Liu X, Wang Y, Song Z, Liu P.

Journal of Experimental & Clinical Cancer Research 2019 Aug; 38(1):361.

Application: IHC-P, IF, Human, Breast cancer, MDA-MB-231, T47D, BT549 cells

Disease

- [Genetic Predisposition to Disease](#)
- [HIV Infections](#)
- [Hypercholesterolemia](#)
- [Hyperlipoproteinemia Type II](#)
- [Meningomyelocele](#)