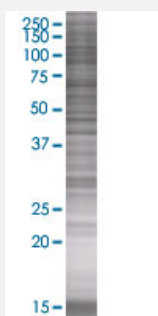


CLDN4 293T Cell Transient Overexpression Lysate(Denatured)

Catalog # H00001364-T01

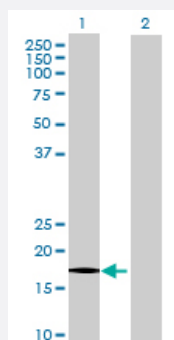
Size 100 uL

Applications



SDS-PAGE Gel

CLDN4 transfected lysate.



Western Blot

Lane 1: CLDN4 transfected lysate (23.1 KDa)

Lane 2: Non-transfected lysate.

Specification

Transfected Cell Line 293T

Plasmid pCMV-CLDN4 full-length

Host Human

Theoretical MW (kDa) 23.1

Quality Control Testing Transient overexpression cell lysate was tested with Anti-CLDN4 antibody ([H00001364-B01](#)) by Western Blots.
SDS-PAGE Gel
CLDN4 transfected lysate.
Western Blot
Lane 1: CLDN4 transfected lysate (23.1 KDa)
Lane 2: Non-transfected lysate.

Storage Buffer

1X Sample Buffer (50 mM Tris-HCl, 2% SDS, 10% glycerol, 300 mM 2-mercaptoethanol, 0.01% Bromophenol blue)

Storage Instruction

Store at -80°C. Aliquot to avoid repeated freezing and thawing.

Applications

- Western Blot

Gene Info — CLDN4

Entrez GeneID[1364](#)**GeneBank Accession#**[NM_001305.3](#)**Protein Accession#**[NP_001296.1](#)**Gene Name**

CLDN4

Gene Alias

CPE-R, CPER, CPETR, CPETR1, WBSR8, hCPE-R

Gene Description

claudin 4

Omim ID[602909](#)**Gene Ontology**[Hyperlink](#)**Gene Summary**

This gene encodes an integral membrane protein, which belongs to the claudin family. The protein is a component of tight junction strands and may play a role in internal organ development and function during pre- and postnatal life. This gene is deleted in Williams-Beuren syndrome, a neurodevelopmental disorder affecting multiple systems. [provided by RefSeq]

Other Designations

Clostridium perfringens enterotoxin receptor 1|Williams-Beuren syndrome chromosomal region 8 protein

Pathway

- [Cell adhesion molecules \(CAMs\)](#)
- [Leukocyte transendothelial migration](#)
- [Tight junction](#)