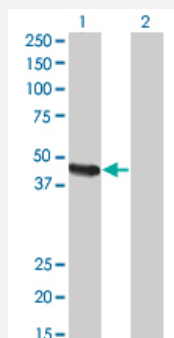


# CPA2 monoclonal antibody (M02), clone 2E11

Catalog # H00001358-M02

Size 100 ug

## Applications

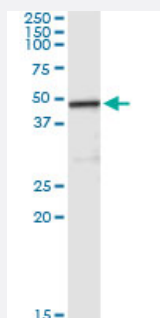


### Western Blot (Transfected lysate)

Western Blot analysis of CPA2 expression in transfected 293T cell line by CPA2 monoclonal antibody (M02), clone 2E11.

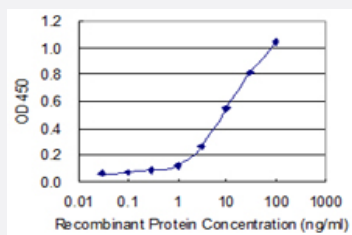
Lane 1: CPA2 transfected lysate(46.8 kDa).

Lane 2: Non-transfected lysate.



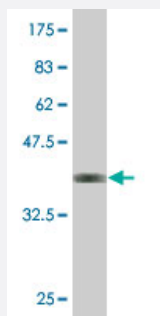
### Immunoprecipitation

Immunoprecipitation of CPA2 transfected lysate using anti-CPA2 monoclonal antibody and Protein A Magnetic Bead, and immunoblotted with CPA2 MaxPab rabbit polyclonal antibody.



### Sandwich ELISA (Recombinant protein)

Detection limit for recombinant GST tagged CPA2 is 0.3 ng/ml as a capture antibody.



Western Blot detection against Immunogen (35.9 KDa) .

## Specification

<b>Product Description</b>	Mouse monoclonal antibody raised against a partial recombinant CPA2.
<b>Immunogen</b>	CPA2 (NP_001860, 117 a.a. ~ 206 a.a) partial recombinant protein with GST tag. MW of the GST tag alone is 26 KDa.
<b>Sequence</b>	NFGAYHTLEEISQEMDNLVAEHPGLVSKVNIGSSSFENRPMNVLFKSTGGDKPAWLDAGIHAREWVTQATALWTANKMVDYGKDPSIT*
<b>Host</b>	Mouse
<b>Reactivity</b>	Human
<b>Isotype</b>	IgG2b Kappa
<b>Quality Control Testing</b>	Antibody Reactive Against Recombinant Protein. Western Blot detection against Immunogen (35.9 KDa) .
<b>Storage Buffer</b>	In 1x PBS, pH 7.4
<b>Storage Instruction</b>	Store at -20°C or lower. Aliquot to avoid repeated freezing and thawing.

## Applications

- Western Blot (Transfected lysate)

Western Blot analysis of CPA2 expression in transfected 293T cell line by CPA2 monoclonal antibody (M02), clone 2E11.

Lane 1: CPA2 transfected lysate(46.8 KDa).

Lane 2: Non-transfected lysate.

[Protocol Download](#)

- Western Blot (Recombinant protein)

[Protocol Download](#)

- Immunoprecipitation

Immunoprecipitation of CPA2 transfected lysate using anti-CPA2 monoclonal antibody and Protein A Magnetic Bead, and immunoblotted with CPA2 MaxPab rabbit polyclonal antibody.

[Protocol Download](#)

- Sandwich ELISA (Recombinant protein)

Detection limit for recombinant GST tagged CPA2 is 0.3 ng/ml as a capture antibody.

[Protocol Download](#)

- ELISA

## Gene Info — CPA2

Entrez GeneID [1358](#)

GeneBank Accession# [NM\\_001869](#)

Protein Accession# [NP\\_001860](#)

Gene Name CPA2

Gene Alias -

Gene Description carboxypeptidase A2 (pancreatic)

Omim ID [600688](#)

Gene Ontology [Hyperlink](#)

**Gene Summary** Three different forms of human pancreatic procarboxypeptidase A have been isolated. The encoded protein represents the A2 form, which is a monomeric protein with different biochemical properties from the A1 and A3 forms. The A2 form of pancreatic procarboxypeptidase acts on aromatic C-terminal residues and is a secreted protein. [provided by RefSeq]

Other Designations -

## Disease

- [Autistic Disorder](#)

- [Genetic Predisposition to Disease](#)

- [Tobacco Use Disorder](#)