

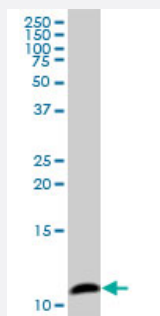
MaxPab®

COX6B1 purified MaxPab mouse polyclonal antibody (B01P)

Catalog # H00001340-B01P

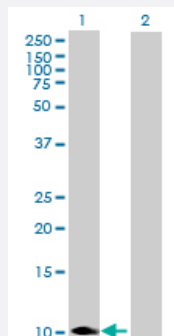
Size 50 ug

Applications



Western Blot (Cell lysate)

COX6B1 MaxPab polyclonal antibody. Western Blot analysis of COX6B1 expression in HepG2 .

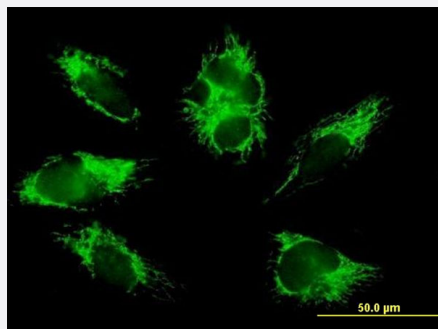


Western Blot (Transfected lysate)

Western Blot analysis of COX6B1 expression in transfected 293T cell line ([H00001340-T01](#)) by COX6B1 MaxPab polyclonal antibody.

Lane 1: COX6B1 transfected lysate(9.46 KDa).

Lane 2: Non-transfected lysate.



Immunofluorescence

Immunofluorescence of purified MaxPab antibody to COX6B1 on HepG2 cell. [antibody concentration 10 ug/ml]

Specification

Product Description

Mouse polyclonal antibody raised against a full-length human COX6B1 protein.

Immunogen	COX6B1 (NP_001854.1, 1 a.a. ~ 86 a.a) full-length human protein.
Sequence	MAEDMETKIKNYKTAPFDSRFPNQNRNCWQNYLDFHRCQKAMTAKGGDISVCEWYQRVYQS LCPTSWVTDWDEQRAEGTFPGKI
Host	Mouse
Reactivity	Human
Quality Control Testing	Antibody reactive against mammalian transfected lysate.
Storage Buffer	In 1x PBS, pH 7.4
Storage Instruction	Store at -20°C or lower. Aliquot to avoid repeated freezing and thawing.

Applications

- Western Blot (Cell lysate)

COX6B1 MaxPab polyclonal antibody. Western Blot analysis of COX6B1 expression in HepG2 .

[Protocol Download](#)

- Western Blot (Transfected lysate)

Western Blot analysis of COX6B1 expression in transfected 293T cell line ([H00001340-T01](#)) by COX6B1 MaxPab polyclonal antibody.

Lane 1: COX6B1 transfected lysate(9.46 KDa).

Lane 2: Non-transfected lysate.

[Protocol Download](#)

- Immunofluorescence

Immunofluorescence of purified MaxPab antibody to COX6B1 on HepG2 cell. [antibody concentration 10 ug/ml]

Gene Info — COX6B1

Entrez GeneID	1340
GeneBank Accession#	NM_001863.3
Protein Accession#	NP_001854.1
Gene Name	COX6B1
Gene Alias	COX6B, COXG

Gene Description	cytochrome c oxidase subunit Vlb polypeptide 1 (ubiquitous)
Omim ID	124089
Gene Ontology	Hyperlink
Gene Summary	Cytochrome c oxidase (COX), the terminal enzyme of the mitochondrial respiratory chain, catalyzes the electron transfer from reduced cytochrome c to oxygen. It is a heteromeric complex consisting of 3 catalytic subunits encoded by mitochondrial genes and multiple structural subunits encoded by nuclear genes. The mitochondrially-encoded subunits function in electron transfer, and the nuclear-encoded subunits may be involved in the regulation and assembly of the complex. This nuclear gene encodes subunit Vlb. Three pseudogenes COX6BP-1, COX6BP-2 and COX6BP-3 have been found on chromosomes 7, 17 and 22q13.1-13.2, respectively. [provided by RefSeq]
Other Designations	cytochrome c oxidase subunit Vlb human cytochrome oxidase subunit Vlb

Pathway

- [Cardiac muscle contraction](#)
- [Metabolic pathways](#)
- [Oxidative phosphorylation](#)