

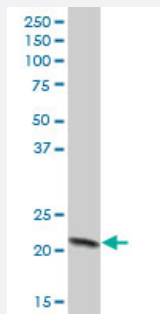
MaxPab®

COX4I1 purified MaxPab mouse polyclonal antibody (B01P)

Catalog # H00001327-B01P

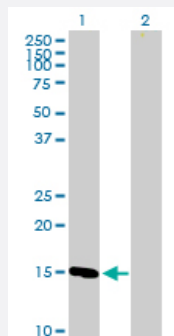
Size 50 ug

Applications



Western Blot (Tissue lysate)

COX4I1 MaxPab polyclonal antibody. Western Blot analysis of COX4I1 expression in human kidney.



Western Blot (Transfected lysate)

Western Blot analysis of COX4I1 expression in transfected 293T cell line ([H00001327-T01](#)) by COX4I1 MaxPab polyclonal antibody.

Lane 1: COX4I1 transfected lysate(18.59 KDa).

Lane 2: Non-transfected lysate.

Specification

Product Description	Mouse polyclonal antibody raised against a full-length human COX4I1 protein.
Immunogen	COX4I1 (NP_001852.1, 1 a.a. ~ 169 a.a) full-length human protein.
Sequence	MLATRVFSLVGKRAISTSVCVRAHESVVKSEDFSLPAYMDRRDHPLPEVAHVHLSASQKALKE KEKASWSSLSMDEKVELYRIKFESFAEMNRGSNEWKTVVGGAMFFIGFTALVIMWQKHVYGP LPQSFDKEWVAKQTKRMLDMKVNPIQGLASKWDYEKNEWKK
Host	Mouse
Reactivity	Human

Quality Control Testing	Antibody reactive against mammalian transfected lysate.
Storage Buffer	In 1x PBS, pH 7.4
Storage Instruction	Store at -20°C or lower. Aliquot to avoid repeated freezing and thawing.

Applications

- Western Blot (Tissue lysate)

COX4I1 MaxPab polyclonal antibody. Western Blot analysis of COX4I1 expression in human kidney.

[Protocol Download](#)

- Western Blot (Transfected lysate)

Western Blot analysis of COX4I1 expression in transfected 293T cell line ([H00001327-T01](#)) by COX4I1 MaxPab polyclonal antibody.

Lane 1: COX4I1 transfected lysate(18.59 KDa).

Lane 2: Non-transfected lysate.

[Protocol Download](#)

Gene Info — COX4I1

Entrez GeneID	1327
GeneBank Accession#	NM_001861.2
Protein Accession#	NP_001852.1
Gene Name	COX4I1
Gene Alias	COX4, COXIV, MGC72016
Gene Description	cytochrome c oxidase subunit IV isoform 1
Omim ID	123864
Gene Ontology	Hyperlink

Gene Summary

Cytochrome c oxidase (COX) is the terminal enzyme of the mitochondrial respiratory chain. It is a multi-subunit enzyme complex that couples the transfer of electrons from cytochrome c to molecular oxygen and contributes to a proton electrochemical gradient across the inner mitochondrial membrane. The complex consists of 13 mitochondrial- and nuclear-encoded subunits. The mitochondrially-encoded subunits perform the electron transfer and proton pumping activities. The functions of the nuclear-encoded subunits are unknown but they may play a role in the regulation and assembly of the complex. This gene encodes the nuclear-encoded subunit IV isoform 1 of the human mitochondrial respiratory chain enzyme. It is located at the 3' of the NOC4 (neighbor of COX4) gene in a head-to-head orientation, and shares a promoter with it. [provided by RefSeq]

Other Designations

-

Pathway

- [Cardiac muscle contraction](#)
- [Metabolic pathways](#)
- [Oxidative phosphorylation](#)