

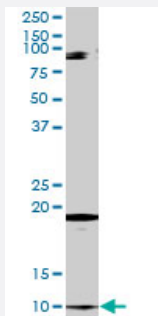
MaxPab®

CLPS purified MaxPab rabbit polyclonal antibody (D01P)

Catalog # H00001208-D01P

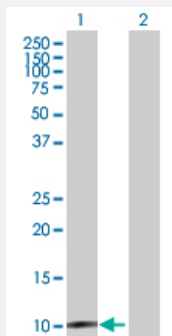
Size 100 ug

Applications



Western Blot (Tissue lysate)

CLPS MaxPab rabbit polyclonal antibody. Western Blot analysis of CLPS expression in human pancreas.



Western Blot (Transfected lysate)

Western Blot analysis of CLPS expression in transfected 293T cell line ([H00001208-T01](#)) by CLPS MaxPab polyclonal antibody.

Lane 1: CLPS transfected lysate(12.00 KDa).

Lane 2: Non-transfected lysate.

Specification

Product Description	Rabbit polyclonal antibody raised against a full-length human CLPS protein.
Immunogen	CLPS (NP_001823.1, 1 a.a. ~ 112 a.a) full-length human protein.
Sequence	MEKILILLVALSVAYAAPGPRGIINLENGELCMNSAQCKSNCCQHSSALGLARCTSMASENSECSVKTLYGIIYKPCERGLTCEGDKTIVGSITNTNFGICHDAGRSKQ
Host	Rabbit
Reactivity	Human
Quality Control Testing	Antibody reactive against mammalian transfected lysate.

Storage Buffer

In 1x PBS, pH 7.4

Storage Instruction

Store at -20°C or lower. Aliquot to avoid repeated freezing and thawing.

Applications

- Western Blot (Tissue lysate)

CLPS MaxPab rabbit polyclonal antibody. Western Blot analysis of CLPS expression in human pancreas.

[Protocol Download](#)

- Western Blot (Transfected lysate)

Western Blot analysis of CLPS expression in transfected 293T cell line ([H00001208-T01](#)) by CLPS MaxPab polyclonal antibody.

Lane 1: CLPS transfected lysate(12.00 KDa).

Lane 2: Non-transfected lysate.

[Protocol Download](#)

Gene Info — CLPS

Entrez GeneID[1208](#)**GeneBank Accession#**[NM_001832.2](#)**Protein Accession#**[NP_001823.1](#)**Gene Name**

CLPS

Gene Alias

-

Gene Description

colipase, pancreatic

Omim ID[120105](#)**Gene Ontology**[Hyperlink](#)**Gene Summary**

The protein encoded by this gene is a cofactor needed by pancreatic lipase for efficient dietary lipid hydrolysis. It binds to the C-terminal, non-catalytic domain of lipase, thereby stabilizing an active conformation and considerably increasing the overall hydrophobic binding site. The gene product allows lipase to anchor noncovalently to the surface of lipid micelles, counteracting the destabilizing influence of intestinal bile salts. This cofactor is only expressed in pancreatic acinar cells, suggesting regulation of expression by tissue-specific elements. [provided by RefSeq]

Other Designations

OTTHUMP00000016271|colipase|pancreatic colipase preproprotein

Disease

- [Diabetes Mellitus](#)
- [Genetic Predisposition to Disease](#)
- [Obesity](#)