

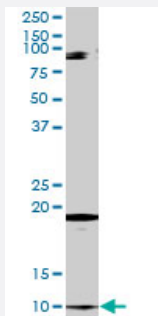
MaxPab®

CLPS MaxPab rabbit polyclonal antibody (D01)

Catalog # H00001208-D01

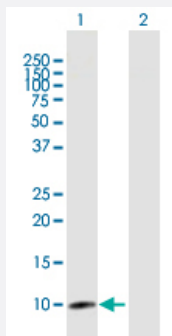
Size 100 uL

Applications



Western Blot (Tissue lysate)

CLPS MaxPab rabbit polyclonal antibody. Western Blot analysis of CLPS expression in human pancreas.

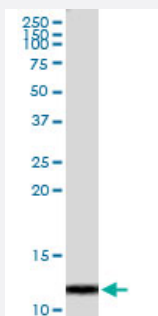


Western Blot (Transfected lysate)

Western Blot analysis of CLPS expression in transfected 293T cell line ([H00001208-T01](#)) by CLPS MaxPab polyclonal antibody.

Lane 1: CLPS transfected lysate(12 KDa).

Lane 2: Non-transfected lysate.



Immunoprecipitation

Immunoprecipitation of CLPS transfected lysate using anti-CLPS MaxPab rabbit polyclonal antibody and Protein A Magnetic Bead, and immunoblotted with CLPS MaxPab mouse polyclonal antibody (B01) ([H00001208-B01](#)).

Specification

Product Description

Rabbit polyclonal antibody raised against a full-length human CLPS protein.

Immunogen	CLPS (NP_001823.1, 1 a.a. ~ 112 a.a) full-length human protein.
Sequence	MEKILILLVALSVAYAAPGPRGIINLENGELCMNSAQCKSNCCQHSSALGLARCTSMASENSECSVKTLTYGIYKPCERGLTCEGDKTIVGSITNTNFGICHDAGRSKQ
Host	Rabbit
Reactivity	Human
Quality Control Testing	Antibody reactive against mammalian transfected lysate.
Storage Buffer	No additive
Storage Instruction	Store at -20°C or lower. Aliquot to avoid repeated freezing and thawing.

Applications

- Western Blot (Tissue lysate)

CLPS MaxPab rabbit polyclonal antibody. Western Blot analysis of CLPS expression in human pancreas.

[Protocol Download](#)

- Western Blot (Transfected lysate)

Western Blot analysis of CLPS expression in transfected 293T cell line ([H00001208-T01](#)) by CLPS MaxPab polyclonal antibody.

Lane 1: CLPS transfected lysate(12 KDa).

Lane 2: Non-transfected lysate.

[Protocol Download](#)

- Immunoprecipitation

Immunoprecipitation of CLPS transfected lysate using anti-CLPS MaxPab rabbit polyclonal antibody and Protein A Magnetic Bead, and immunoblotted with CLPS MaxPab mouse polyclonal antibody (B01) ([H00001208-B01](#)).

[Protocol Download](#)

Gene Info — CLPS

Entrez GeneID	1208
GeneBank Accession#	NM_001832.2
Protein Accession#	NP_001823.1

Gene Name	CLPS
Gene Alias	-
Gene Description	colipase, pancreatic
Omim ID	120105
Gene Ontology	Hyperlink
Gene Summary	<p>The protein encoded by this gene is a cofactor needed by pancreatic lipase for efficient dietary lipid hydrolysis. It binds to the C-terminal, non-catalytic domain of lipase, thereby stabilizing an active conformation and considerably increasing the overall hydrophobic binding site. The gene product allows lipase to anchor noncovalently to the surface of lipid micelles, counteracting the destabilizing influence of intestinal bile salts. This cofactor is only expressed in pancreatic acinar cells, suggesting regulation of expression by tissue-specific elements. [provided by RefSeq]</p>
Other Designations	OTTHUMP00000016271 colipase pancreatic colipase preproprotein

Disease

- [Diabetes Mellitus](#)
- [Genetic Predisposition to Disease](#)
- [Obesity](#)