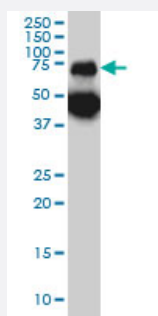


TPP1 monoclonal antibody (M01), clone 3B1

Catalog # H00001200-M01

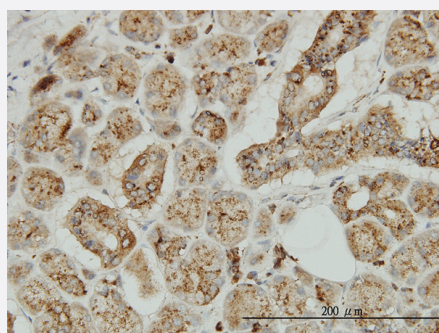
Size 100 ug

Applications



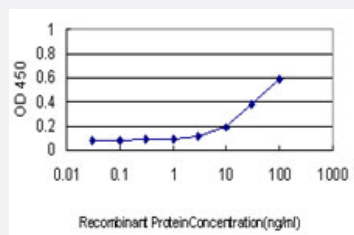
Western Blot (Cell lysate)

TPP1 monoclonal antibody (M01), clone 3B1 Western Blot analysis of TPP1 expression in A-431 (Cat # L015V1).



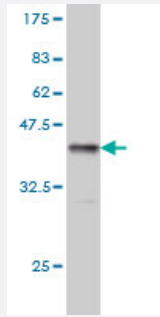
Immunohistochemistry (Formalin/PFA-fixed paraffin-embedded sections)

Immunoperoxidase of monoclonal antibody to TPP1 on formalin-fixed paraffin-embedded human salivary gland. [antibody concentration 3 ug/ml]



Sandwich ELISA (Recombinant protein)

Detection limit for recombinant GST tagged TPP1 is approximately 0.1ng/ml as a capture antibody.



Western Blot detection against Immunogen (37.84 KDa) .

Specification

Product Description	Mouse monoclonal antibody raised against a partial recombinant TPP1.
Immunogen	TPP1 (AAH14863, 195 a.a. ~ 304 a.a) partial recombinant protein with GST tag. MW of the GST tag alone is 26 KDa.
Sequence	GLHLGVTPSVIRKRYNLT SQDVSGTSNNSQACAQFLEQYFHDSDLAQFMRLF GGNFAHQASVA RVVGQQGRGRAGIEASLDVQYLMSAGANISTWVYSSPGRHEGQEPF
Host	Mouse
Reactivity	Human
Interspecies Antigen Sequence	Mouse (87)
Isotype	IgG1 Kappa
Quality Control Testing	Antibody Reactive Against Recombinant Protein. Western Blot detection against Immunogen (37.84 KDa) .
Storage Buffer	In 1x PBS, pH 7.4
Storage Instruction	Store at -20°C or lower. Aliquot to avoid repeated freezing and thawing.

Applications

- Western Blot (Cell lysate)

TPP1 monoclonal antibody (M01), clone 3B1 Western Blot analysis of TPP1 expression in A-431 (Cat # L015V1).

[Protocol Download](#)

- Western Blot (Recombinant protein)

[Protocol Download](#)

- Immunohistochemistry (Formalin/PFA-fixed paraffin-embedded sections)

Immunoperoxidase of monoclonal antibody to TPP1 on formalin-fixed paraffin-embedded human salivary gland. [antibody concentration 3 ug/ml]

[Protocol Download](#)

- Sandwich ELISA (Recombinant protein)

Detection limit for recombinant GST tagged TPP1 is approximately 0.1ng/ml as a capture antibody.

[Protocol Download](#)

- ELISA

Gene Info — TPP1

Entrez GeneID [1200](#)

GeneBank Accession# [BC014863](#)

Protein Accession# [AAH14863](#)

Gene Name TPP1

Gene Alias CLN2, GIG1, LPIC, MGC21297

Gene Description tripeptidyl peptidase I

Omim ID [204500 607998](#)

Gene Ontology [Hyperlink](#)

Gene Summary This gene encodes a member of the sedolisin family of serine proteases. The protease functions in the lysosome to cleave N-terminal tripeptides from substrates, and has weaker endopeptidase activity. It is synthesized as a catalytically-inactive enzyme which is activated and auto-proteolyzed upon acidification. Mutations in this gene result in late-infantile neuronal ceroid lipofuscinosis, which is associated with the failure to degrade specific neuropeptides and a subunit of ATP synthase in the lysosome. [provided by RefSeq]

Other Designations ceroid-lipofuscinosis, neuronal 2, late infantile (Jansky-Bielschowsky disease)|growth-inhibiting protein 1|lysosomal pepstatin insensitive protease|tripeptidyl aminopeptidase|tripeptidyl-peptidase I

Publication Reference

- [Altered expression of TPP1 in fibroblast-like synovial cells might be involved in the pathogenesis of rheumatoid arthritis.](#)

Qing YF, Zhou JG, Zhao MC, Xie WG, Yang QB, Xing Y, Zeng SP, Jiang H.

Rheumatology International 2012 Aug; 32(8):2503.

Application: WB-Ce, Human, Fibroblast-like synovial cells

Pathway

- [Lysosome](#)

Disease

- [Kidney Failure](#)
- [Neuronal Ceroid-Lipofuscinoses](#)