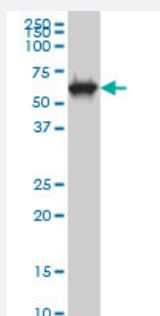


CLK3 monoclonal antibody (M04), clone 5B2

Catalog # H00001198-M04

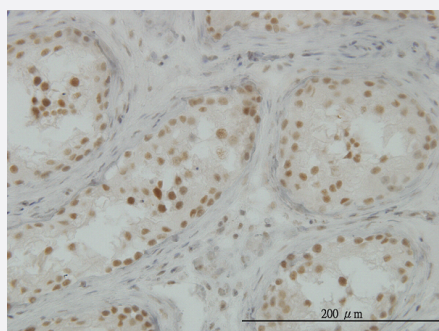
Size 100 ug

Applications



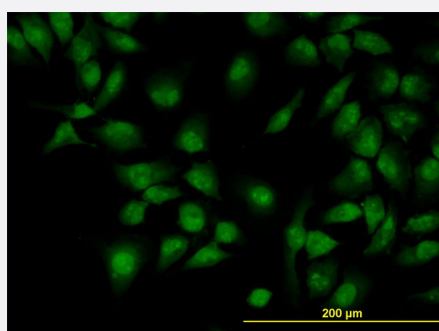
Western Blot (Cell lysate)

CLK3 monoclonal antibody (M04), clone 5B2 Western Blot analysis of CLK3 expression in MCF-7 (Cat # L046V1).



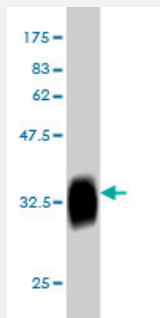
Immunohistochemistry (Formalin/PFA-fixed paraffin-embedded sections)

Immunoperoxidase of monoclonal antibody to CLK3 on formalin-fixed paraffin-embedded human testis. [antibody concentration 1.5 ug/ml]



Immunofluorescence

Immunofluorescence of monoclonal antibody to CLK3 on HeLa cell. [antibody concentration 10 ug/ml]



Western Blot detection against Immunogen (36.74 KDa) .

Specification

Product Description	Mouse monoclonal antibody raised against a partial recombinant CLK3.
Immunogen	CLK3 (AAH02555, 36 a.a. ~ 136 a.a) partial recombinant protein with GST tag. MW of the GST tag alone is 26 KDa.
Sequence	YPSRREPPPPRRSRSRSHDRLPYQRRYRERRDSDTYRCEERSPSFGEDYYGPSRSRHRRRSRER GPYRTRKHAHHCHKRRTRSCSSASSRSQQSSKRSSRSV
Host	Mouse
Reactivity	Human
Isotype	IgG2b Kappa
Quality Control Testing	Antibody Reactive Against Recombinant Protein. Western Blot detection against Immunogen (36.74 KDa) .
Storage Buffer	In 1x PBS, pH 7.4
Storage Instruction	Store at -20°C or lower. Aliquot to avoid repeated freezing and thawing.

Applications

- Western Blot (Cell lysate)

CLK3 monoclonal antibody (M04), clone 5B2 Western Blot analysis of CLK3 expression in MCF-7 (Cat # L046V1).

[Protocol Download](#)

- Western Blot (Recombinant protein)

[Protocol Download](#)

- Immunohistochemistry (Formalin/PFA-fixed paraffin-embedded sections)

Immunoperoxidase of monoclonal antibody to CLK3 on formalin-fixed paraffin-embedded human testis. [antibody concentration 1.5 ug/ml]

[Protocol Download](#)

- ELISA

- Immunofluorescence

Immunofluorescence of monoclonal antibody to CLK3 on HeLa cell. [antibody concentration 10 ug/ml]

Gene Info — CLK3

Entrez GeneID	1198
---------------	----------------------

GeneBank Accession#	BC002555
---------------------	--------------------------

Protein Accession#	AAH02555
--------------------	--------------------------

Gene Name	CLK3
-----------	------

Gene Alias	FLJ22858, PHCLK3, PHCLK3/152
------------	------------------------------

Gene Description	CDC-like kinase 3
------------------	-------------------

Omim ID	602990
---------	------------------------

Gene Ontology	Hyperlink
---------------	---------------------------

Gene Summary	This gene encodes a protein belonging to the serine/threonine type protein kinase family. This protein is a nuclear dual-specificity kinase that regulates the intranuclear distribution of the serine/arginine-rich (SR) family of splicing factors. Two transcript variants encoding different isoforms have been found for this gene. Related pseudogenes are located on chromosomes 1 and 9. [provided by RefSeq]
--------------	---

Other Designations	dual specificity protein kinase CLK3
--------------------	--------------------------------------