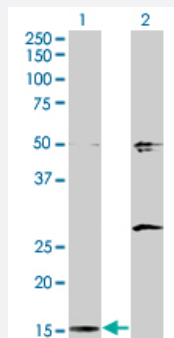


# AP2S1 monoclonal antibody (M01), clone 3E4

Catalog # H00001175-M01

Size 100 ug

## Applications

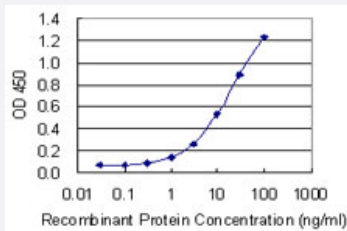


### Western Blot (Transfected lysate)

Western Blot analysis of AP2S1 expression in transfected 293T cell line by AP2S1 monoclonal antibody (M01), clone 3E4.

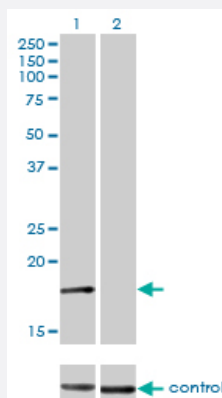
Lane 1: AP2S1 transfected lysate(17 KDa).

Lane 2: Non-transfected lysate.



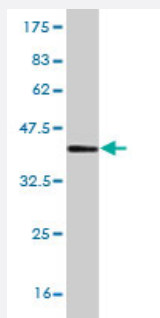
### Sandwich ELISA (Recombinant protein)

Detection limit for recombinant GST tagged AP2S1 is 0.3 ng/ml as a capture antibody.



### RNAi Knockdown (Antibody validated)

Western blot analysis of AP2S1 over-expressed 293 cell line, cotransfected with AP2S1 Validated Chimera RNAi (Cat # H00001175-R01V) (Lane 2) or non-transfected control (Lane 1). Blot probed with AP2S1 monoclonal antibody (M01), clone 3E4 (Cat # H00001175-M01). GAPDH (36.1 kDa) used as specificity and loading control.



Western Blot detection against Immunogen (41.36 KDa) .

## Specification

<b>Product Description</b>	Mouse monoclonal antibody raised against a full length recombinant AP2S1.
<b>Immunogen</b>	AP2S1 (AAH06337, 1 a.a. ~ 142 a.a) full-length recombinant protein with GST tag. MW of the GST tag alone is 26 KDa.
<b>Sequence</b>	MIRFILIQNRAGKTRLAKWYMQFDDDEKQKLIEEVHAVVTVRDAKHTNFVEFRNFKIYRRYAGLYFC ICVDVNDNNLAYLEAIHNFVEVLNEYFHNVCELDLVFNFYKVYTVVDEMFLAGEIRETSQTKVLKQL LMLQSLE
<b>Host</b>	Mouse
<b>Reactivity</b>	Human
<b>Isotype</b>	IgG2a Kappa
<b>Quality Control Testing</b>	Antibody Reactive Against Recombinant Protein. Western Blot detection against Immunogen (41.36 KDa) .
<b>Storage Buffer</b>	In 1x PBS, pH 7.4
<b>Storage Instruction</b>	Store at -20°C or lower. Aliquot to avoid repeated freezing and thawing.

## Applications

### ● Western Blot (Transfected lysate)

Western Blot analysis of AP2S1 expression in transfected 293T cell line by AP2S1 monoclonal antibody (M01), clone 3E4.

Lane 1: AP2S1 transfected lysate(17 KDa).

Lane 2: Non-transfected lysate.

[Protocol Download](#)

- Western Blot (Recombinant protein)

[Protocol Download](#)

- Sandwich ELISA (Recombinant protein)

Detection limit for recombinant GST tagged AP2S1 is 0.3 ng/ml as a capture antibody.

[Protocol Download](#)

- ELISA

- RNAi Knockdown (Antibody validated)

Western blot analysis of AP2S1 over-expressed 293 cell line, cotransfected with AP2S1 Validated Chimera RNAi ( Cat # H00001175-R01V ) (Lane 2) or non-transfected control (Lane 1). Blot probed with AP2S1 monoclonal antibody (M01), clone 3E4 (Cat # H00001175-M01 ). GAPDH ( 36.1 kDa ) used as specificity and loading control.

[Protocol Download](#)

## Gene Info — AP2S1

Entrez GeneID [1175](#)

GeneBank Accession# [BC006337](#)

Protein Accession# [AAH06337](#)

Gene Name AP2S1

Gene Alias AP17, AP17-DELTA, CLAPS2

Gene Description adaptor-related protein complex 2, sigma 1 subunit

Omim ID [602242](#)

Gene Ontology [Hyperlink](#)

**Gene Summary** One of two major clathrin-associated adaptor complexes, AP-2, is a heterotetramer which is associated with the plasma membrane. This complex is composed of two large chains, a medium chain, and a small chain. This gene encodes the small chain of this complex. Alternative splicing has been observed in this gene and results in two known transcripts. [provided by RefSeq]

**Other Designations** clathrin assembly protein 2 small chain|clathrin-associated/assembly/adaptor protein, small 2 (17 kD)

## Pathway

- [Endocytosis](#)