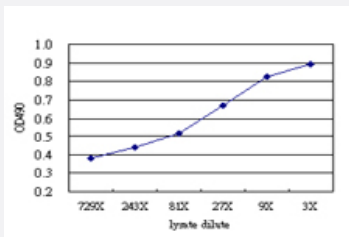


# CHML (Human) Matched Antibody Pair

Catalog # H00001122-AP51      Size 1 Set

## Applications



Sandwich ELISA detection sensitivity ranging from approximately 729x to 3x dilution of the CHML 293T overexpression lysate (non-denatured).

## Specification

|                                      |  |
|--------------------------------------|--|
| <b>Product Description</b>           | This antibody pair set comes with a matched antibody pair to detect and quantify the protein level of human CHML.  |
| <b>Reactivity</b>                    | Human  |
| <b>Interspecies Antigen Sequence</b> | Mouse (79%); Rat (78%)   |
| <b>Quality Control Testing</b>       | Standard curve using CHML 293T overexpression lysate (non-denatured) as an analyte. Sandwich ELISA detection sensitivity ranging from approximately 729x to 3x dilution of the CHML 293T overexpression lysate (non-denatured).                          |
| <b>Supplied Product</b>              | Antibody pair set content:<br>1. Capture antibody: mouse monoclonal anti-CHML (100 ug)<br>2. Detection antibody: rabbit purified polyclonal anti-CHML (50 ug)<br>*Reagents are sufficient for at least 3-5 x 96 well plates using recommended protocols. |
| <b>Storage Instruction</b>           | Store reagents of the antibody pair set at -20°C or lower. Please aliquot to avoid repeated freeze thaw cycle. Reagents should be returned to -20°C storage immediately after use.   |

## Applications

- ELISA Pair (Transfected lysate)

[Protocol Download](#)

## Gene Info — CHML

|                    |  |
|--------------------|--|
| Entrez GeneID      | <a href="#">1122</a>   |
| Gene Name          | CHML   |
| Gene Alias         | FLJ10071, FLJ13361, REP2   |
| Gene Description   | choroideremia-like (Rab escort protein 2)  |
| Omim ID            | <a href="#">118825</a>   |
| Gene Ontology      | <a href="#">Hyperlink</a>  |
| Gene Summary       | The product of the CHML gene supports geranylgeranylation of most Rab proteins and may substitute for REP-1 in tissues other than retina. CHML is localized close to the gene for Usher syndrome type II. [provided by RefSeq] |
| Other Designations | OTTHUMP00000037644 REP-2, Rab escort protein 2 choroideremia-like Rab escort protein 2   |

## Disease

- [Asthma](#)
- [Genetic Predisposition to Disease](#)
- [Multiple Sclerosis](#)